



VERDE

BY SOBHA

**SOBHA**  
REALTY



## PASSIONATE ABOUT PERFECTIONISM.

**SOBHA Realty**

A beacon of excellence.

A hallmark of world-class quality.

A blueprint for exceptional construction.

A full-page background image showing the Dubai skyline at sunset. The sun is a bright, glowing orb on the left side of the frame, casting a warm, orange light across the sky. The city skyline is silhouetted against this light, with the Burj Khalifa being the most prominent skyscraper on the right. Other buildings of varying heights and shapes are visible along the horizon. The foreground is dark, suggesting a body of water or a flat landscape. The overall mood is serene and majestic.

TRAILBLAZING  
TRANSFORMATIONS.  
LIKE NO OTHER.



**SOBHA Realty**

redefines the concept of urban luxury living  
with a repertoire of real estate projects  
across Dubai. With razor-sharp focus on  
quality and innovation, it has created a  
plethora of iconic spaces such as extravagant  
palaces, ornate mosques, cutting edge  
campuses and ultra-luxurious communities  
with grand villas and apartments.

Every detail in SOBHA ushers in limitless  
possibilities of fine living.





## SPEARHEADING THE SOBHA WAY.

SOBHA Realty is a pioneer in introducing the 'Backward Integration' model in the real estate industry, where the best of every discipline work together, from precision engineering to innovative architectural designs and from superior concrete products, glazing and metal works to top-notch interiors. The ultimate outcome is a unique offering of unmatched quality that goes above and beyond the customer's expectation.





IN-HOUSE MASTERY



## DESIGN

Architecture, interior design, and landscaping are cornerstones of every project. A talented team of professionals at SOBHA Realty conceptualizes meticulously planned residential developments.

## ENGINEERING AND CONTRACTING

Innovative concepts materialize when coupled with robust engineering and contracting. Each aspect of the project from structure to mechanical, electrical to plumbing details are minutely scrutinized to precision.

## MATERIAL SOURCING

SOBHA Realty procures world-class technology to integrate building materials, furniture and other home accessories. Every product offers a hallmark of quality for its users.

## CRAFTSMANSHIP

A committed team of craftsmen ensures that every inch of a home looks aesthetically pleasing for years to come. From waterproofing the bathrooms to finishing of the tiles, the impeccable attention to detail lends a fine quality to our projects.

## QUALITY CONTROL

The quality control at SOBHA Realty works with an astute eye to ensure the remotest of defects are weeded out before completion. The process has secured a place in the Harvard Business School case studies and has invariably set a new benchmark globally.





## MESSAGE FROM THE CHAIRMAN

Sobha Realty is committed to providing the finest standards of luxury residences and leave a lasting impression in the minds of our esteemed clientele, with our immaculate craftsmanship and meticulous finishing. Our painstaking efforts to deliver premium residential spaces is in congruence with our mission to raise the benchmark of the real estate segment in the Emirate. With Dubai's real estate market on an upward trajectory, we remain steadfast in our resolve to capitalize on the opportunities that lie ahead, and we anticipate further growth in the coming years. We are confident that our latest offering – Verde by Sobha at JLT will go above and beyond your expectations and we look forward to welcoming you to a new superior living in Dubai.

**-Mr. PNC Menon**



NEIGHBOURHOOD.  
A NEW ACUMEN.



## Jumeirah Lake Towers.

A new destination for the citizens of the world to flourish.

A unique neighbourhood that offers something for everyone, from thriving business parks to community living, scintillating restaurant pop-ups to five-star hotels, high street to haute couture brands, and pristine parks to professional pitches, all within a short distance. Come and discover a new kind of living in an eclectic universe-called JLT.







VERDE

BY SOBHA

**A NEW KIND OF LIVING**









## HARMONIOUS ABODE. A NEW HUE.

Enjoying the radiant views of nature from the cosy corners of your home is ordinary only at SOBHA Verde. The panorama of the green meadows, the sight of the manicured golf course, and the pristine views of the skyline are all you need to devour the less ordinary side of life.





## HOME. A NEW PERSONA.

A tower that resonates your aura.  
A space that celebrates your arrival.  
An address that marks your presence.  
A befitting home for your legacy.





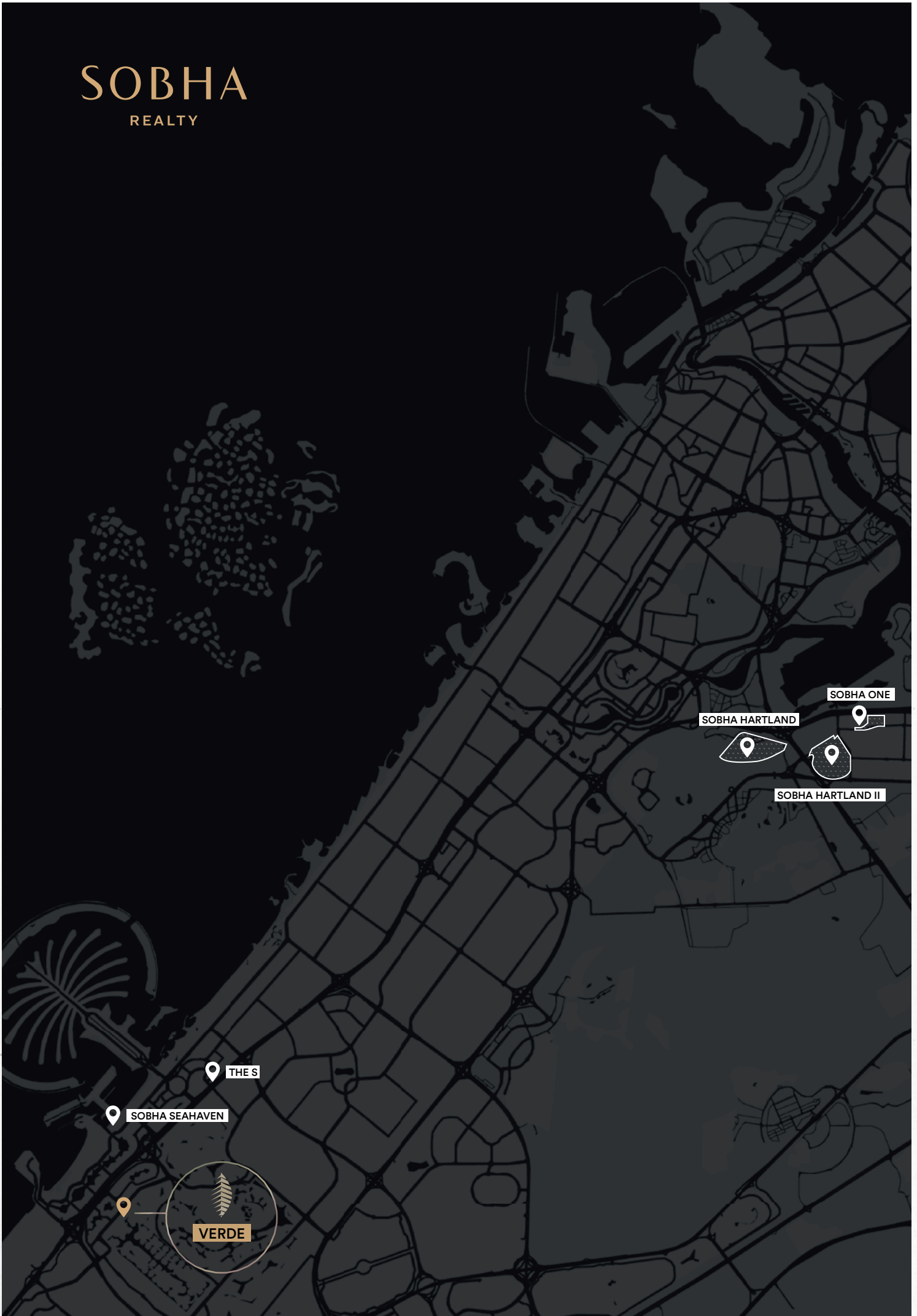
Embrace a new kind of living in one of Dubai's most coveted districts-JLT, surrounded by tranquil lakes, thriving residential complexes, buzzing high streets and more. With 66 stories, SOBHA Verde is one of the tallest residential towers offering picturesque views of the lush green meadows and emerald golf course. The uber-luxury homes are designed to suit the discerning tastes of the globe trotters with world-class amenities.

1-3.5 BEDROOM APARTMENTS FROM 771.12 SQFT TO 1921.14 SQFT



# SOBHA

REALTY



SOBHA ONE

SOBHA HARTLAND

SOBHA HARTLAND II

THE S

SOBHA SEAHAVEN

VERDE



# LOCATION DISTANCE. A NEW INSIGHT.

SHEIKH ZAYED ROAD

**2.5** KM

3 MINS AWAY

SCHOOL  
(EMIRATES INTERNATIONAL SCHOOL)

**3.5** KM

6 MINS AWAY

DUBAI HARBOUR

**4** KM

7 MINS AWAY

DUBAI MARINA

**5** KM

5 MINS AWAY

JBR BEACH

**7** KM

7 MINS AWAY

MARINA MALL

**7** KM

7 MINS AWAY

AIN DUBAI

**8** KM

12 MINS AWAY

PALM JUMEIRAH

**8** KM

8 MINS AWAY

MALL OF THE EMIRATES

**10** KM

10 MINS AWAY

MADINAT JUMEIRAH

**10** KM

10 MINS AWAY

BURJ AL ARAB

**10** KM

10 MINS AWAY



PANORAMIC.



A NEW VIEW.





A spectacular visual treat awaits you! The golden shades of the boundless sky unveils a marvellous canvas for the uncovered eyes. The breath-taking views of the vast meadows and jade green golf course leave a lingering feeling of serenity throughout the day.





## ZENITH. A NEW HEIGHT.

Enchant your senses while living in a striking façade of geometry. The city below looks so far away, like another world. The structure is a private cocoon of your happiness; its magnificent windows will let you discern what your heart desires.





## INDULGENCE. A NEW CORNERSTONE.

The lounge is place of lavish leisure with soft cushions and cool breeze. After a long working day, immerse yourself in the rooftop delights to renew your emotional fortitude.



## OPULENCE. A NEW PERCEPTION.

Revel in the sumptuous luxury of your elegant living room as you observe the brilliance of natural light orchestrating a new harmony through the glazed windows.





## GRANDNESS. A NEW DESIGN.

Let the jubilation of life echo in your sanctuary.  
The thoughtfully designed abode is spacious  
enough to accommodate all those created  
memories with your loved ones.



## PRIVACY. A NEW COMFORT.

Discover endless possibilities of exuberance in the cosy sphere of your chamber. The stunning views of the starry sky turn the bespoke room into a realm of your dreams.





## MINDFULNESS. A NEW SENSATION.

Spend hours in silence in the quietest quarter of your abode as you listen to your inner voice. Let it be your chosen place to complete pivotal pieces of work.





FIRST IMPRESSIONS  
THAT LAST FOREVER





AMENITIES





DIVING. A NEW DEPTH.



Escape the mundane and plunge into the aqua blue. The crystal clear water echoes the sky and offers a warm hug to soothe your senses.





## FITNESS. A NEW REGIME

Take a leap and mark out a beat with a plethora of fitness workout equipment to help you reach your best form in no time.





## PLAYGROUND. A NEW ARENA.

Put a pause on your game console and play the real game with your friends. Enjoy a game or a burst of heart-out laughter with your besties on your home turf; live these moments forever.



## LOUNGE. A NEW LUXURY.

Cherish the whiff of freshness while you unwind under a starlit sky. A thoughtfully designed lounge sets the mood for barbeque parties with your loved ones.



## GROUND FLOOR

- Retail

## LEVEL 08

- Outdoor Kids Play Area
- BBQ Area & Lounge
- Outdoor Gymnasium / Yoga
- Swimming Pool
- Kids pool
- Jacuzzi
- Indoor Kids Play Area
- Indoor Gymnasium
- Steam & Sauna
- Changing rooms

## LEVEL 65

- Lounge
- Meeting room + Pantry
- Changing rooms
- Infinity Edge Pool
- Jacuzzi
- Outdoor Lounge

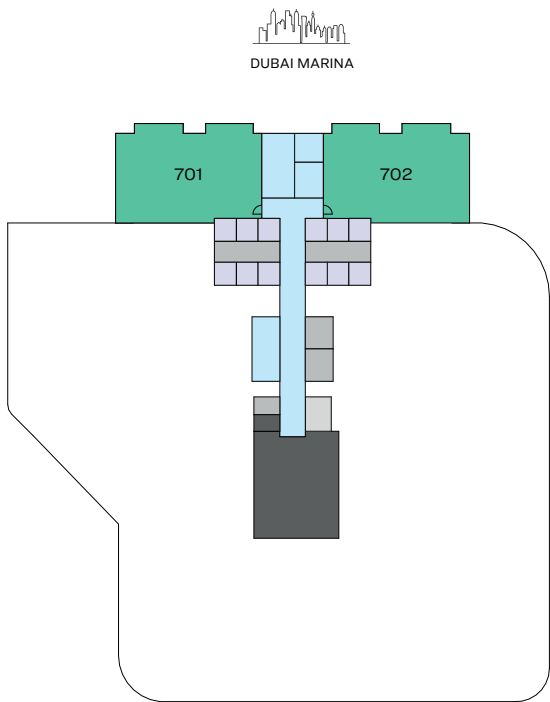


Infinity Edge Pool

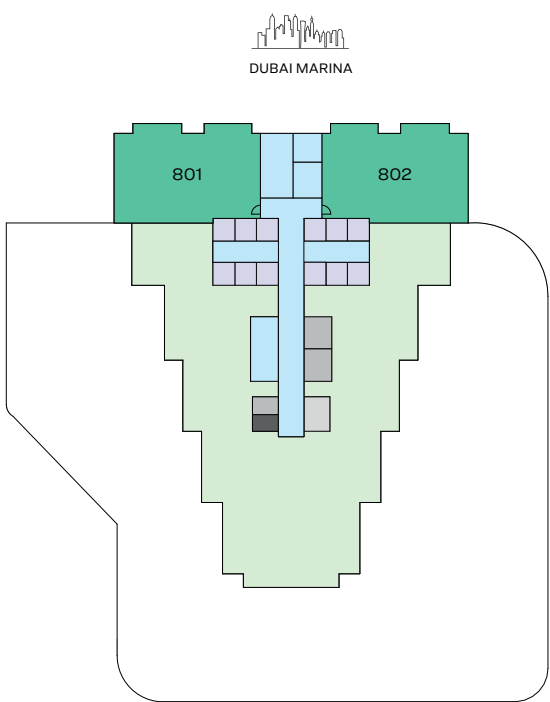
## FLOOR AND UNIT PLANS



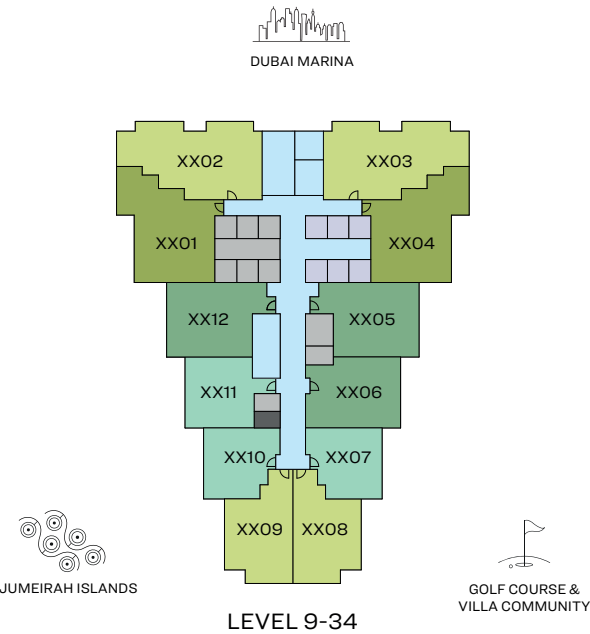
FLOOR PLAN LAYOUT



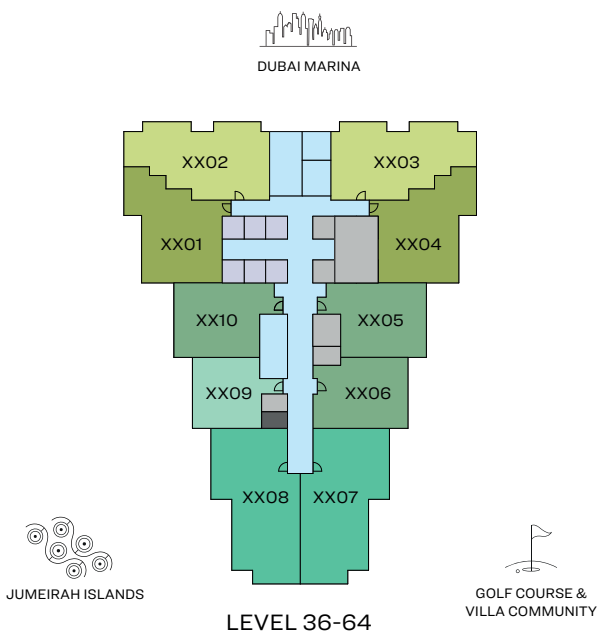
LEVEL 7



LEVEL 8



LEVEL 9-34



LEVEL 36-64

- |              |              |            |             |              |
|--------------|--------------|------------|-------------|--------------|
| 1 BED UNIT   | 2 BED UNIT   | 3 BED UNIT | CIRCULATION | LIFTS        |
| 1.5 BED UNIT | 2.5 BED UNIT | AMENITIES  | SERVICES    | GARBAGE ROOM |

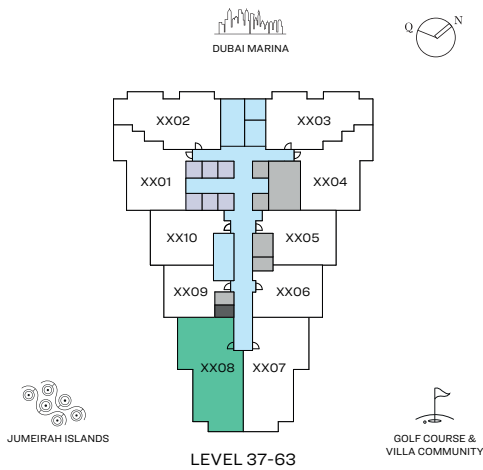
Disclaimer: 1. All dimensions are in metric, measured to wall finishes. 2. All materials, dimensions & drawings are approximate. 3. Information is subject to change without notice, at developer's absolute discretion. 4. Actual area may vary from the stated area. 5. Drawing are not to scale. 6. All images used are for illustrative purpose only and do not represent the actual size, features, specifications, fittings and furnishings. 7. The developer reserves the right to make revisions/ alterations, at its absolute discretion, without any liability whatsoever.

# 3 BEDROOM APARTMENT

TYPE A (with study/store room, maid room and powder room + balcony)

## TOTAL SALEABLE AREA

SUITE = 1,646.77 SQ.FT.  
BALCONY = 139.82 SQ.FT.  
TOTAL = 1,786.59 SQ.FT.



UNIT



List of unit numbers with this unit plan:

## VIEWS

Golf Course, Low Rise Villa Community, Jumeirah Islands  
3708, 3808, 3908, 4008, 4108, 4208, 4308, 4408, 4508, 4608, 4708, 4808, 4908, 5008, 5108, 5208, 5308, 5408, 5508, 5608, 5708, 5808, 5908, 6008, 6108, 6208, 6308

Disclaimer: 1. All dimensions are in metric, measured to wall finishes. 2. All materials, dimensions & drawings are approximate. 3. Information is subject to change without notice, at developer's absolute discretion. 4. Actual area may vary from the stated area. 5. Drawing are not to scale. 6. All images used are for illustrative purpose only and do not represent the actual size, features, specifications, fittings and furnishings. 7. The developer reserves the right to make revisions/ alterations, at its absolute discretion, without any liability whatsoever.

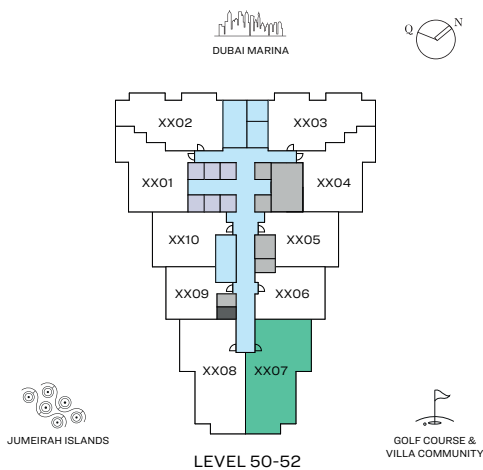




3 BEDROOM APARTMENT

TYPE A (with study/store room, maid room and powder room + balcony) VARIANT 1

TOTAL SALEABLE AREA  
SUITE = 1,646.77 SQ.FT.  
BALCONY = 139.82 SQ.FT.  
TOTAL UNIT AREA= 1,786.59 SQ.FT.



UNIT



List of unit numbers with this unit plan:

VIEWS

Park, Golf Course, Low Rise Villa Community, Jumeirah Islands  
5007, 5107, 5207



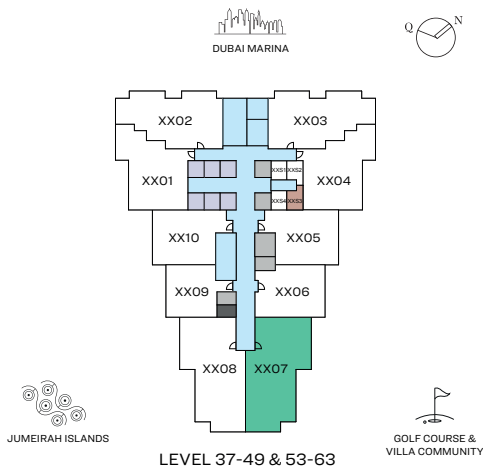
Disclaimer: 1. All dimensions are in metric, measured to wall finishes. 2. All materials, dimensions & drawings are approximate. 3. Information is subject to change without notice, at developer's absolute discretion. 4. Actual area may vary from the stated area. 5. Drawing are not to scale. 6. All images used are for illustrative purpose only and do not represent the actual size, features, specifications, fittings and furnishings. 7. The developer reserves the right to make revisions/ alterations, at its absolute discretion, without any liability whatsoever.

## 3 BEDROOM APARTMENT + EXTERNAL STORE

TYPE A (with study/store room, maid room and powder room + balcony) VARIANT 1

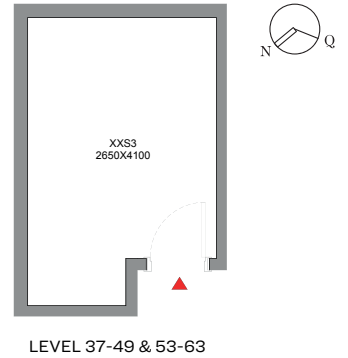
### TOTAL SALEABLE AREA

SUITE = 1,646.77 SQ.FT.  
BALCONY = 139.82 SQ.FT.  
TOTAL UNIT AREA= 1,786.59 SQ.FT.  
EXTERNAL STORE = 134.55 SQ.FT.  
TOTAL = 1,921.14 SQ.FT.



UNIT

EXTERNAL STORE



List of unit numbers with this unit plan:

### VIEWS

Park, Golf Course, Low Rise Villa Community, Jumeirah Islands

3707, 3807, 3907, 4007, 4107, 4207, 4307, 4407, 4507, 4607, 4707, 4807, 4907, 5307, 5407, 5507, 5607, 5707, 5807, 5907, 6007, 6107, 6207, 6307

Disclaimer: 1. All dimensions are in metric, measured to wall finishes. 2. All materials, dimensions & drawings are approximate. 3. Information is subject to change without notice, at developer's absolute discretion. 4. Actual area may vary from the stated area. 5. Drawing are not to scale. 6. All images used are for illustrative purpose only and do not represent the actual size, features, specifications, fittings and furnishings. 7. The developer reserves the right to make revisions/ alterations, at its absolute discretion, without any liability whatsoever.





3 BEDROOM APARTMENT + EXTERNAL STORE

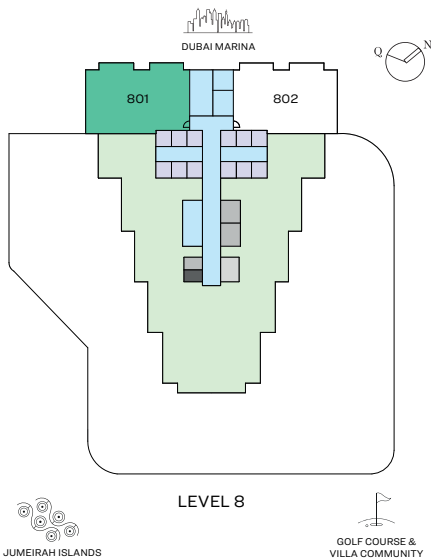
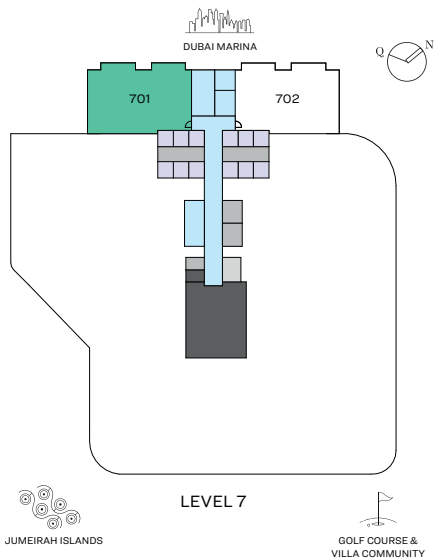
TYPE B (with maid room and powder room + balcony)

TOTAL SALEABLE AREA

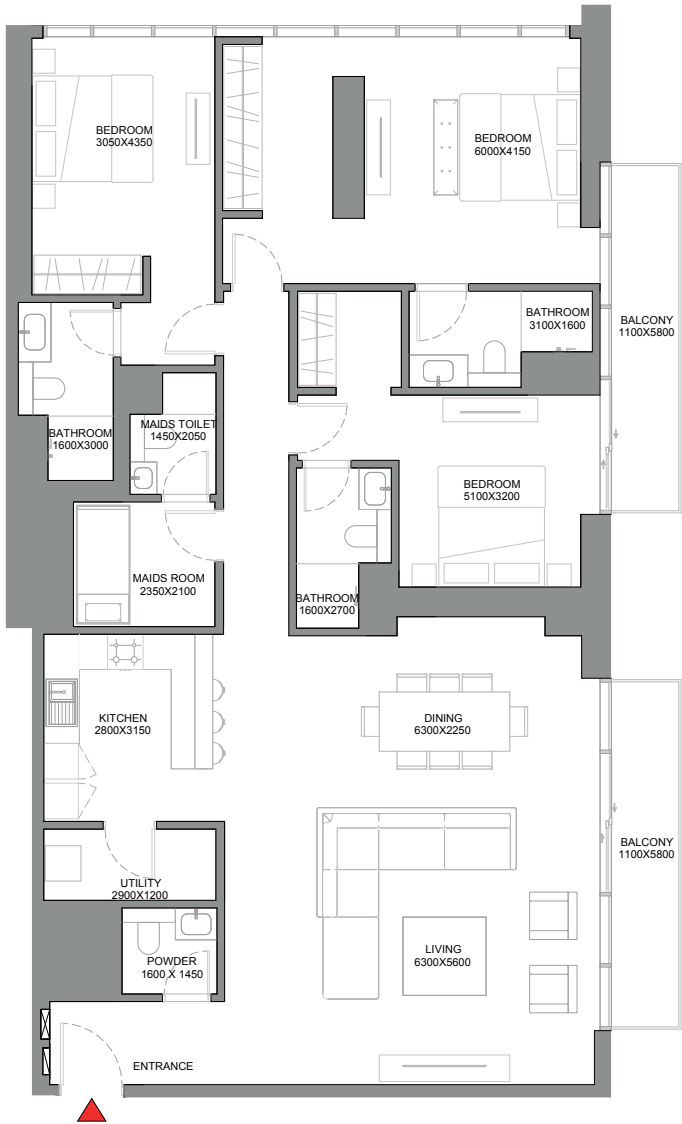
SUITE RANGE = 1,843.75 - 1,846.44 SQ.FT.

BALCONY = 152.31 SQ.FT.

TOTAL UNIT AREA RANGE = 1,996.06 - 1,998.75 SQ.FT.



UNIT



List of unit numbers with this unit plan:

IEWS

JLT Skyline  
701, 801

Disclaimer: 1. All dimensions are in metric, measured to wall finishes. 2. All materials, dimensions & drawings are approximate. 3. Information is subject to change without notice, at developer's absolute discretion. 4. Actual area may vary from the stated area. 5. Drawing are not to scale. 6. All images used are for illustrative purpose only and do not represent the actual size, features, specifications, fittings and furnishings. 7. The developer reserves the right to make revisions/ alterations, at its absolute discretion, without any liability whatsoever.

3 BEDROOM APARTMENT + EXTERNAL STORE

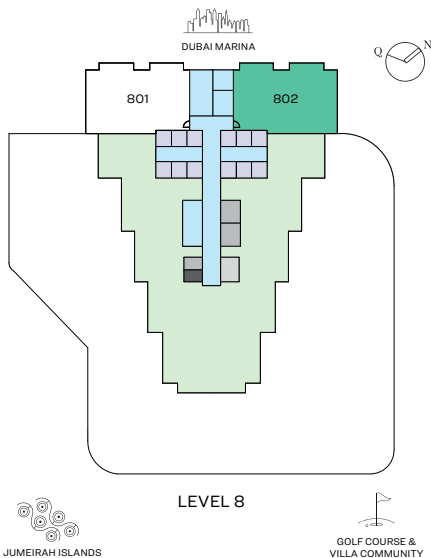
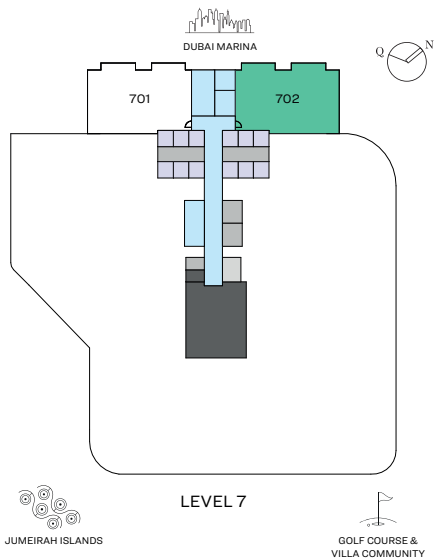
TYPE B (with maid room and powder room + balcony) VARIANT 1

TOTAL SALEABLE AREA

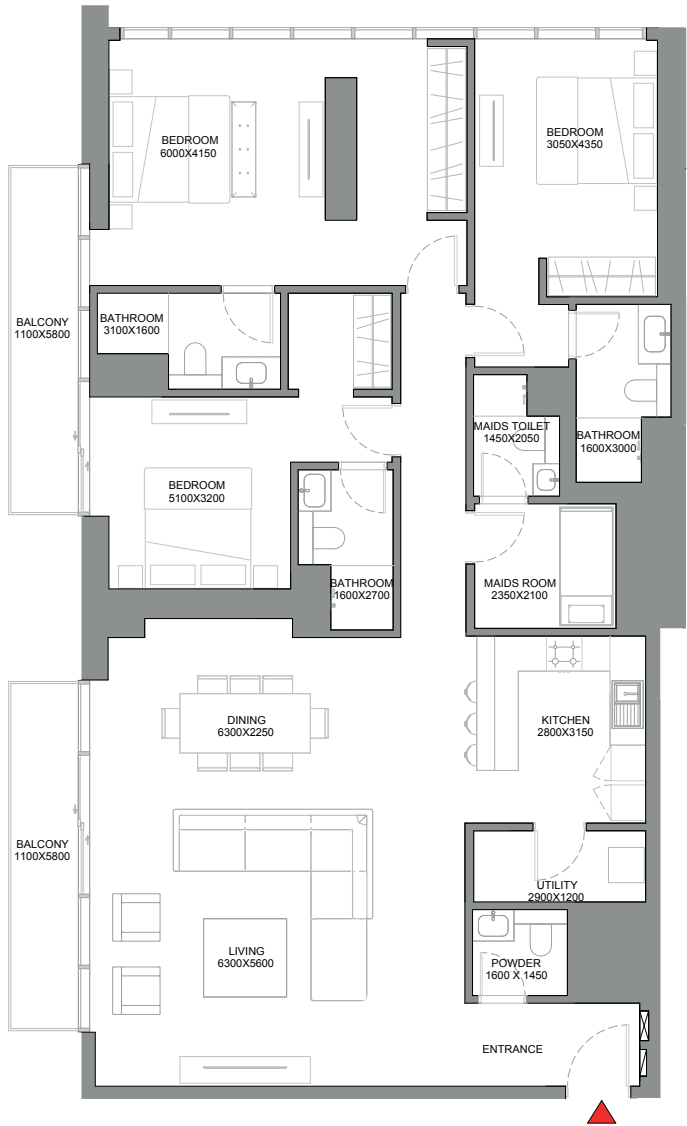
SUITE RANGE = 1,844.72 - 1,847.41 SQ.FT.

BALCONY = 152.31 SQ.FT.

TOTAL UNIT AREA RANGE = 1,997.03 - 1,999.72 SQ.FT.



UNIT



List of unit numbers with this unit plan:

VIEWS

JLT Skyline  
702, 802

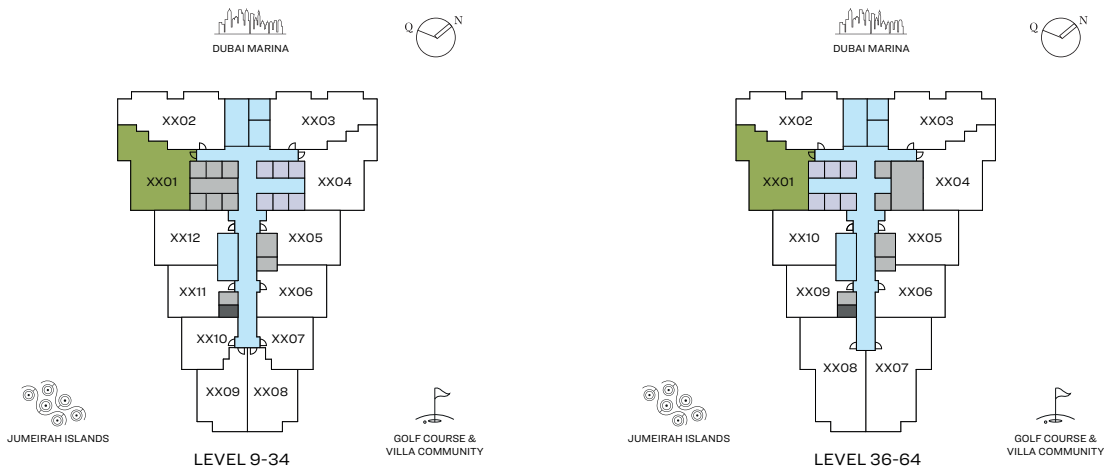


Disclaimer: 1. All dimensions are in metric, measured to wall finishes. 2. All materials, dimensions & drawings are approximate. 3. Information is subject to change without notice, at developer's absolute discretion. 4. Actual area may vary from the stated area. 5. Drawing are not to scale. 6. All images used are for illustrative purpose only and do not represent the actual size, features, specifications, fittings and furnishings. 7. The developer reserves the right to make revisions/ alterations, at its absolute discretion, without any liability whatsoever.



2.5 BEDROOM APARTMENT  
TYPE A (with study and powder room + balcony)

TOTAL SALEABLE AREA  
SUITE = 1,234.19 SQ.FT.  
BALCONY = 131.75 SQ.FT.  
TOTAL = 1,365.94 SQ.FT.



UNIT



List of unit numbers with this unit plan:

VIEWS

JLT Skyline, Amenities  
901, 1001, 1101, 1201, 1301, 1401, 1501, 1601, 1701, 1801, 1901, 2001

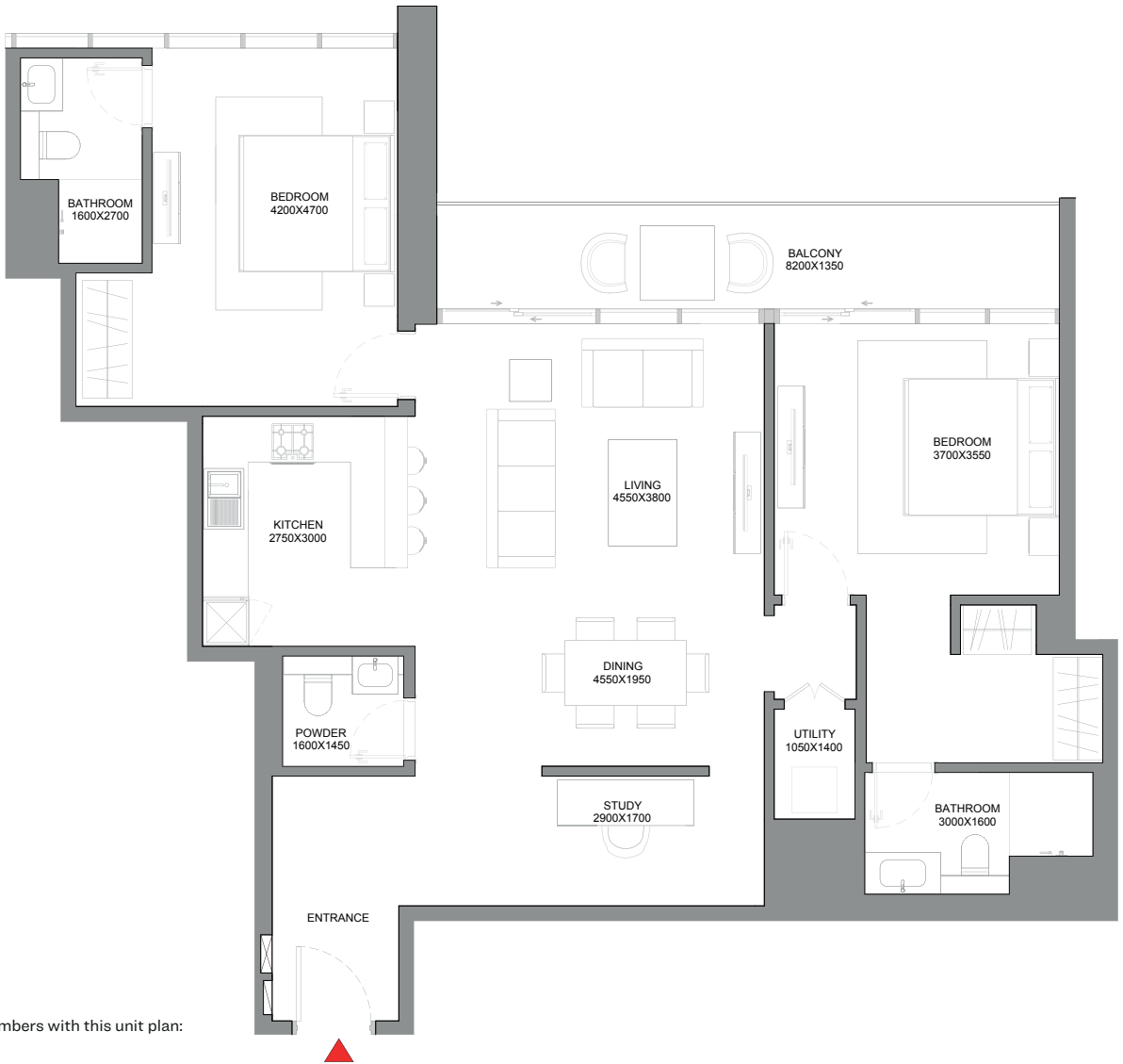
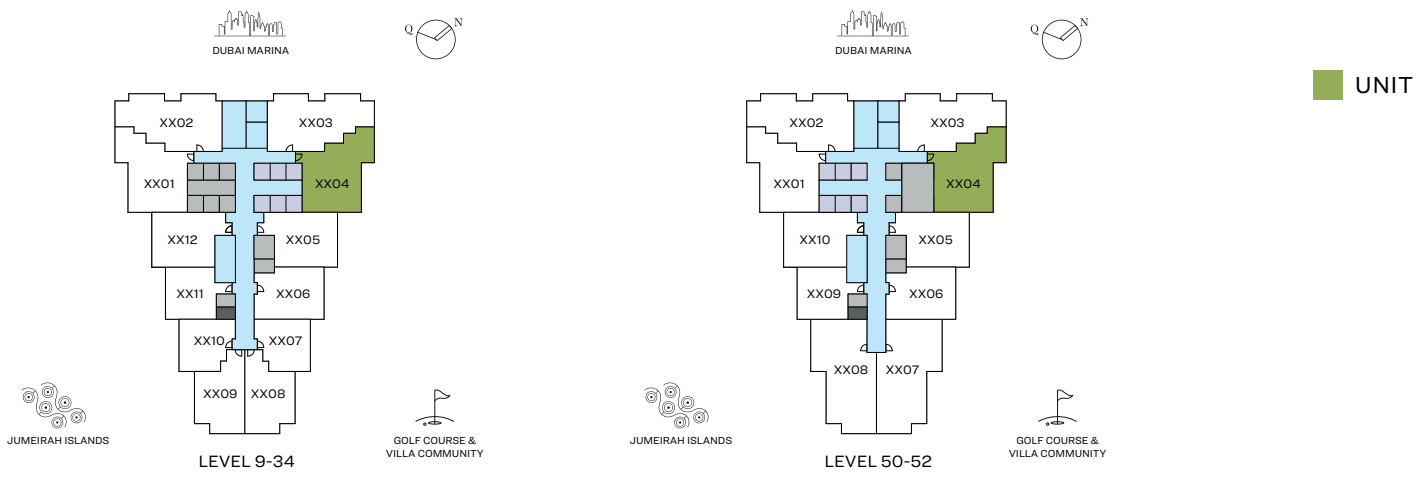
JLT Skyline  
2101, 2201, 2301, 2401, 2501, 2601, 2701, 2801, 2901, 3001, 3101, 3201, 3301, 3401, 3601, 3701, 3801, 3901, 4001, 4101, 4201, 4301, 4401, 4501, 4601, 4701, 4801, 4901, 5001, 5101, 5201, 5301, 5401, 5501, 5601, 5701, 5801, 5901, 6001, 6101, 6201, 6301, 6401

Disclaimer: 1. All dimensions are in metric, measured to wall finishes. 2. All materials, dimensions & drawings are approximate. 3. Information is subject to change without notice, at developer's absolute discretion. 4. Actual area may vary from the stated area. 5. Drawing are not to scale. 6. All images used are for illustrative purpose only and do not represent the actual size, features, specifications, fittings and furnishings. 7. The developer reserves the right to make revisions/ alterations, at its absolute discretion, without any liability whatsoever.



2.5 BEDROOM APARTMENT  
TYPE A (with study and powder room + balcony) VARIANT 1

TOTAL SALEABLE AREA  
SUITE = 1,234.84 SQ.FT.  
BALCONY = 131.10 SQ.FT.  
TOTAL = 1,365.94 SQ.FT.



List of unit numbers with this unit plan:

VIEWS

JLT Skyline, Park, Golf Course, Low Rise Villa Community, Amenities  
904, 1004, 1104, 1204, 1304, 1404, 1504, 1604, 1704, 1804, 1904, 2004

JLT Skyline, Park, Golf Course, Low Rise Villa Community  
2104, 2204, 2304, 2404, 2504, 2604, 2704, 2804, 2904, 3004, 3104, 3204, 3304, 3404, 5004, 5104, 5204

Disclaimer: 1. All dimensions are in metric, measured to wall finishes. 2. All materials, dimensions & drawings are approximate. 3. Information is subject to change without notice, at developer's absolute discretion. 4. Actual area may vary from the stated area. 5. Drawing are not to scale. 6. All images used are for illustrative purpose only and do not represent the actual size, features, specifications, fittings and furnishings. 7. The developer reserves the right to make revisions/ alterations, at its absolute discretion, without any liability whatsoever.





## 2.5 BEDROOM APARTMENT + EXTERNAL STORE

TYPE A (with study and powder room + balcony) VARIANT 1

### TOTAL SALEABLE AREA

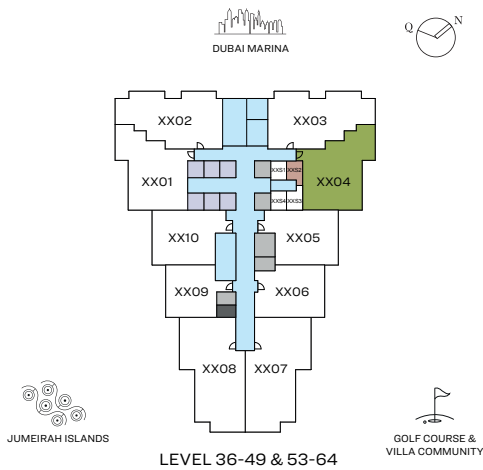
SUITE = 1,234.84 SQ.FT.

BALCONY = 131.10 SQ.FT.

TOTAL UNIT AREA= 1,365.94 SQ.FT.

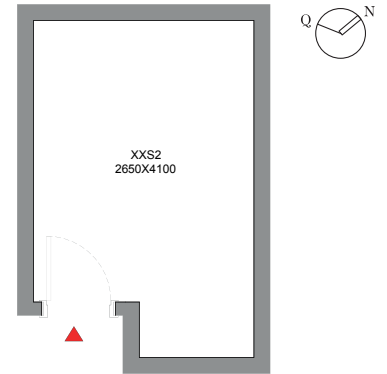
EXTERNAL STORE = 134.55 SQ.FT.

TOTAL = 1,500.49 SQ.FT.



UNIT

EXTERNAL STORE



List of unit numbers with this unit plan:

### VIEWS

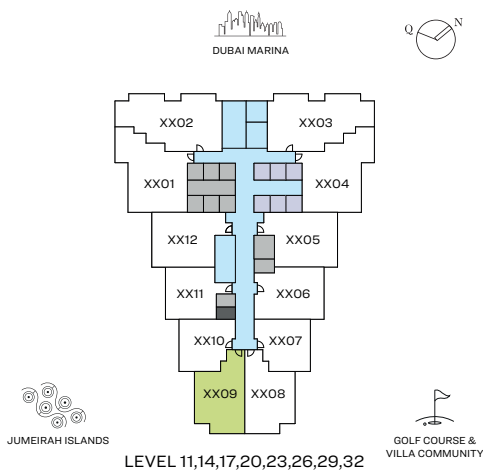
JLT Skyline, Park, Golf Course, Low Rise Villa Community

3604, 3704, 3804, 3904, 4004, 4104, 4204, 4304, 4404, 4504, 4604, 4704, 4804, 4904, 5304, 5404, 5504, 5604, 5704, 5804, 5904, 6004, 6104, 6204, 6304, 6404

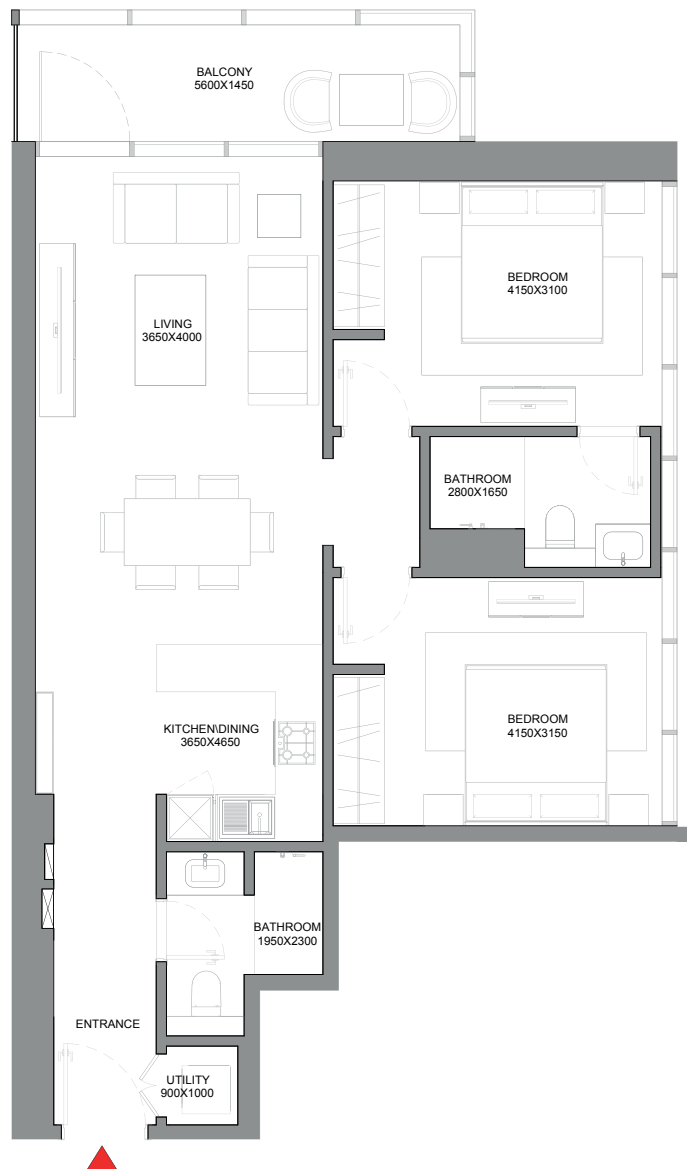
Disclaimer: 1. All dimensions are in metric, measured to wall finishes. 2. All materials, dimensions & drawings are approximate. 3. Information is subject to change without notice, at developer's absolute discretion. 4. Actual area may vary from the stated area. 5. Drawing are not to scale. 6. All images used are for illustrative purpose only and do not represent the actual size, features, specifications, fittings and furnishings. 7. The developer reserves the right to make revisions/ alterations, at its absolute discretion, without any liability whatsoever.

2 BEDROOM APARTMENT  
TYPE B (with powder room + balcony)

TOTAL SALEABLE AREA  
SUITE = 909.44 SQ.FT.  
BALCONY = 108.18 SQ.FT.  
TOTAL = 1,017.62 SQ.FT.



UNIT



List of unit numbers with this unit plan:

VIEWS

Golf Course, Low Rise Villa Community, Jumeirah Islands, Amenities  
1109, 1409, 1709, 2009

Golf Course, Low Rise Villa Community, Jumeirah Islands  
2309, 2609, 2909, 3209

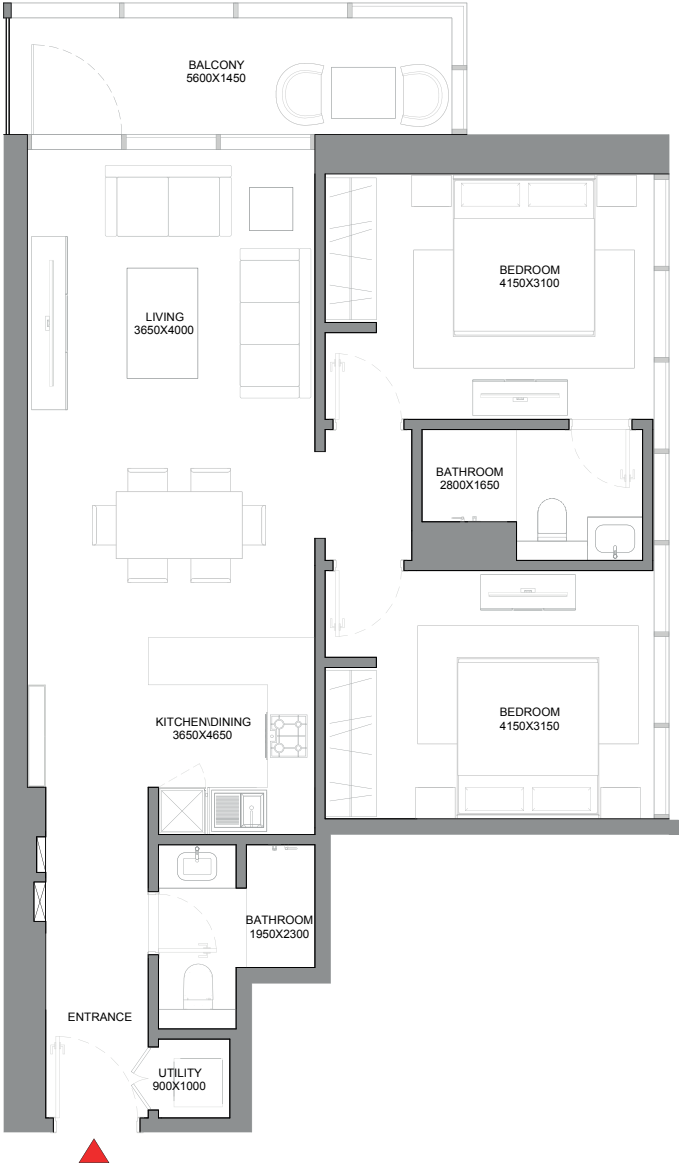
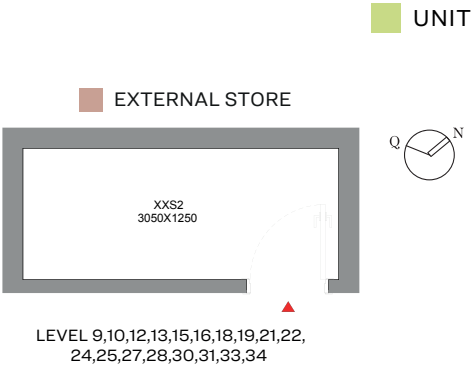
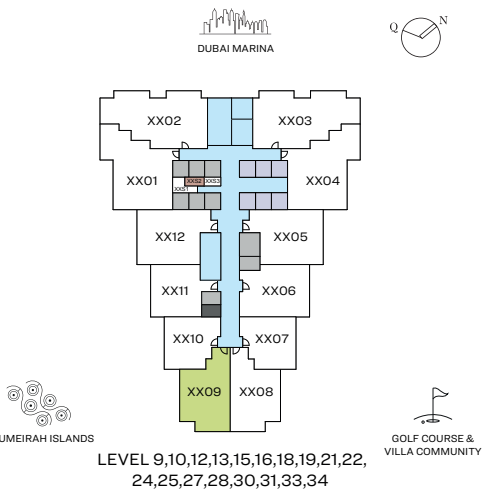


Disclaimer: 1. All dimensions are in metric, measured to wall finishes. 2. All materials, dimensions & drawings are approximate. 3. Information is subject to change without notice, at developer's absolute discretion. 4. Actual area may vary from the stated area. 5. Drawing are not to scale. 6. All images used are for illustrative purpose only and do not represent the actual size, features, specifications, fittings and furnishings. 7. The developer reserves the right to make revisions/ alterations, at its absolute discretion, without any liability whatsoever.



2 BEDROOM APARTMENT + EXTERNAL STORE  
TYPE B (with powder room + balcony)

TOTAL SALEABLE AREA  
SUITE = 909.44 SQ.FT.  
BALCONY = 108.18 SQ.FT.  
TOTAL UNIT AREA= 1,017.62 SQ.FT.  
EXTERNAL STORE = 49.73 SQ.FT.  
TOTAL = 1,067.35 SQ.FT.



List of unit numbers with this unit plan:

VIEWS

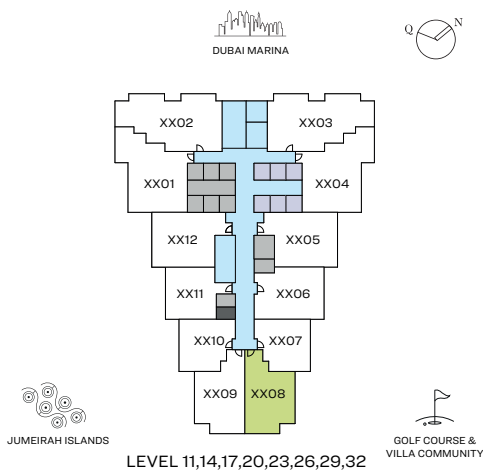
Golf Course, Low Rise Villa Community, Jumeirah Islands, Amenities  
909, 1009, 1209, 1309, 1509, 1609, 1809, 1909

Golf Course, Low rise villa Community, Jumeirah Islands  
2109, 2209, 2409, 2509, 2709, 2809, 3009, 3109, 3309, 3409

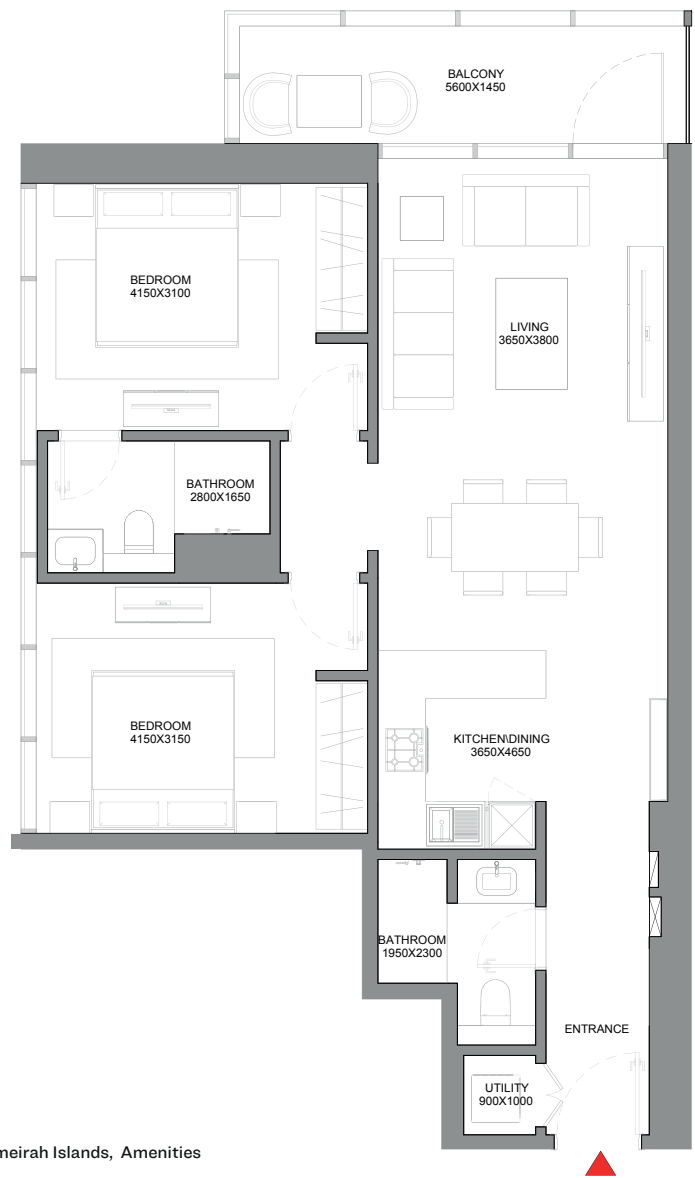
Disclaimer: 1. All dimensions are in metric, measured to wall finishes. 2. All materials, dimensions & drawings are approximate. 3. Information is subject to change without notice, at developer's absolute discretion. 4. Actual area may vary from the stated area. 5. Drawing are not to scale. 6. All images used are for illustrative purpose only and do not represent the actual size, features, specifications, fittings and furnishings. 7. The developer reserves the right to make revisions/ alterations, at its absolute discretion, without any liability whatsoever.

2 BEDROOM APARTMENT  
TYPE B (with powder room + balcony) VARIANT 1

TOTAL SALEABLE AREA  
SUITE = 909.44 SQ.FT.  
BALCONY = 108.18 SQ.FT.  
TOTAL = 1,017.62 SQ.FT.



UNIT



List of unit numbers with this unit plan:

VIEWS

Golf Course, Low Rise Villa Community, Jumeirah Islands, Amenities  
1108, 1408, 1708, 2008  
Golf Course, Low Rise Villa Community, Jumeirah Islands  
2308, 2608, 2908, 3208

Disclaimer: 1. All dimensions are in metric, measured to wall finishes. 2. All materials, dimensions & drawings are approximate. 3. Information is subject to change without notice, at developer's absolute discretion. 4. Actual area may vary from the stated area. 5. Drawing are not to scale. 6. All images used are for illustrative purpose only and do not represent the actual size, features, specifications, fittings and furnishings. 7. The developer reserves the right to make revisions/ alterations, at its absolute discretion, without any liability whatsoever.

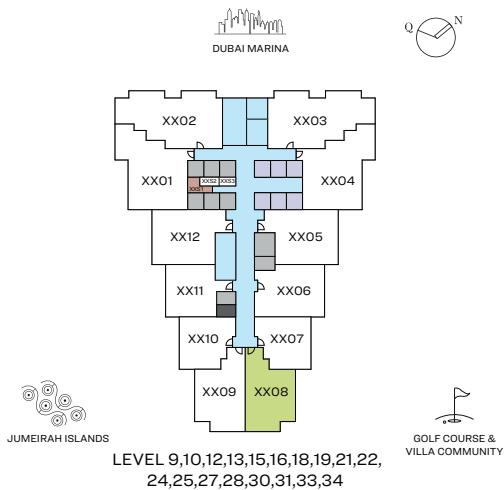


2 BEDROOM APARTMENT + EXTERNAL STORE

TYPE B (with powder room + balcony) VARIANT 1

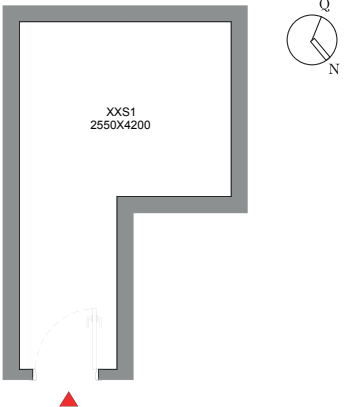
TOTAL SALEABLE AREA

SUITE = 909.44 SQ.FT.  
BALCONY = 108.18 SQ.FT.  
TOTAL UNIT AREA= 1,017.62 SQ.FT.  
EXTERNAL STORE = 103.33 SQ.FT.  
TOTAL = 1,120.95 SQ.FT.

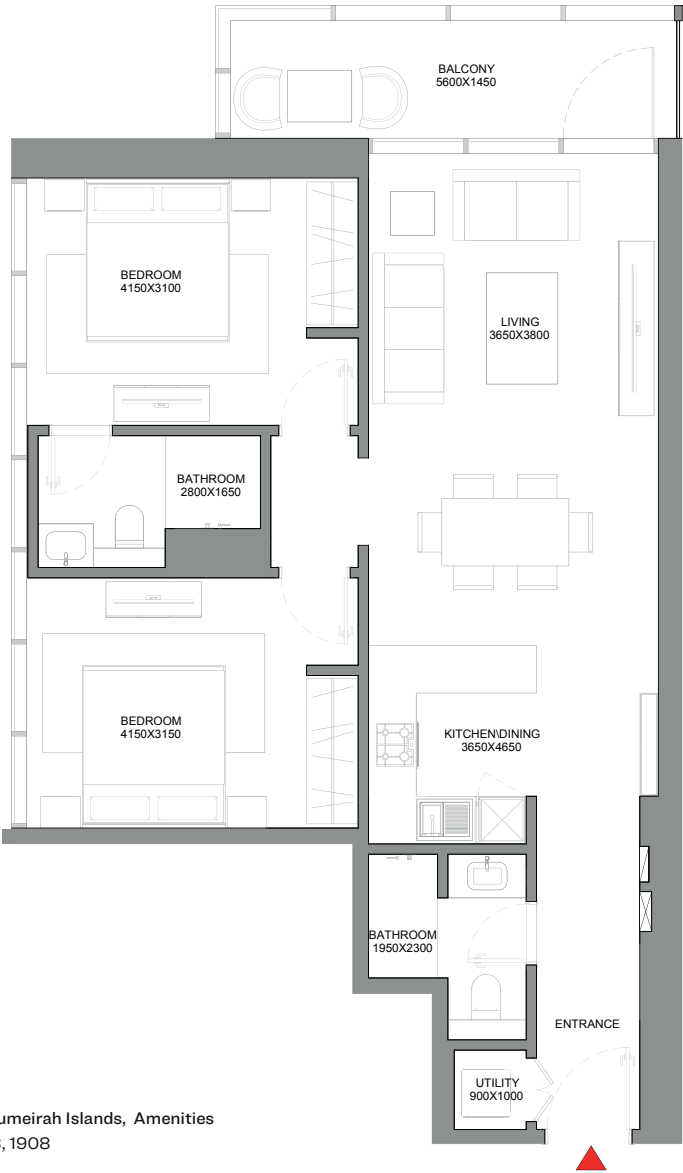


UNIT

EXTERNAL STORE



LEVEL 9,10,12,13,15,16,18,19,21,22, 24,25,27,28,30,31,33,34



List of unit numbers with this unit plan:

VIEWS

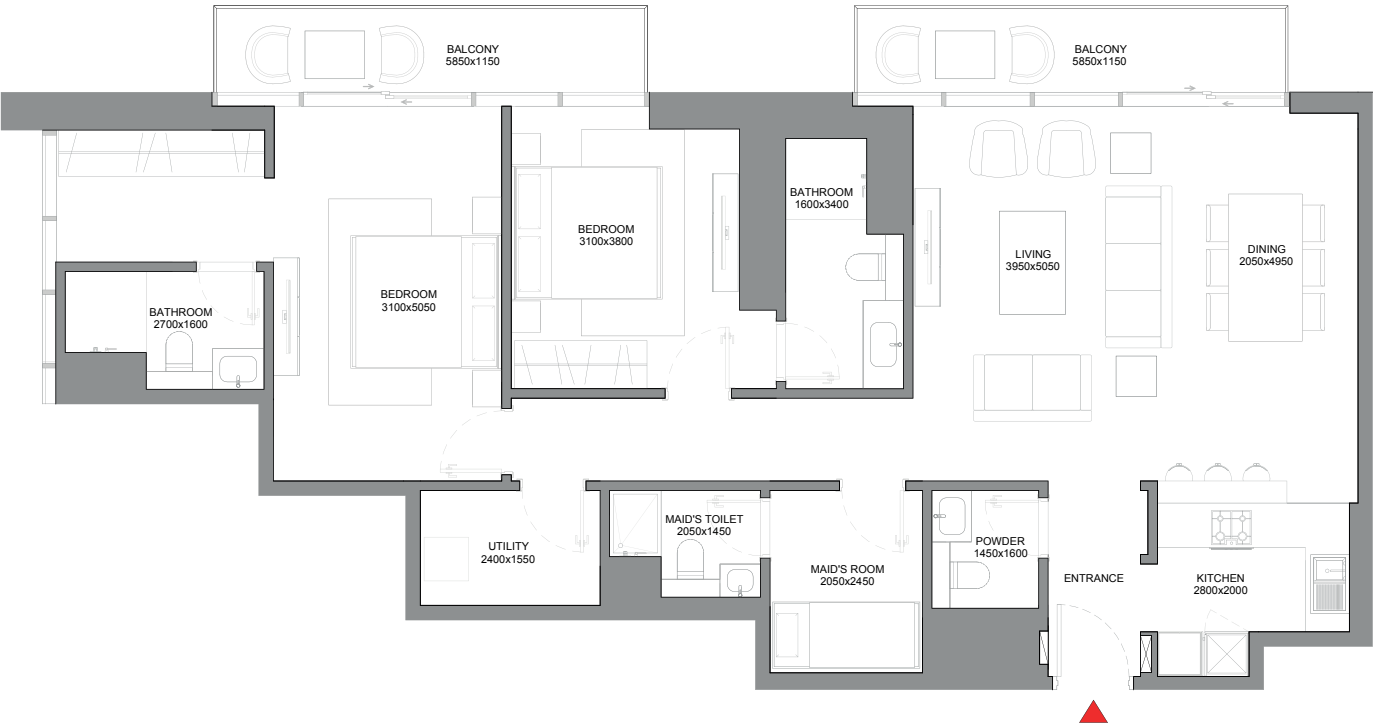
Golf Course, Low Rise Villa Community, Jumeirah Islands, Amenities  
908, 1008, 1208, 1308, 1508, 1608, 1808, 1908

Golf Course, Low Rise Villa Community, Jumeirah Islands  
2108, 2208, 2408, 2508, 2708, 2808, 3008, 3108, 3308, 3408

Disclaimer: 1. All dimensions are in metric, measured to wall finishes. 2. All materials, dimensions & drawings are approximate. 3. Information is subject to change without notice, at developer's absolute discretion. 4. Actual area may vary from the stated area. 5. Drawing are not to scale. 6. All images used are for illustrative purpose only and do not represent the actual size, features, specifications, fittings and furnishings. 7. The developer reserves the right to make revisions/ alterations, at its absolute discretion, without any liability whatsoever.

2 BEDROOM APARTMENT  
TYPE C (with maid room and powder room + balcony)

TOTAL SALEABLE AREA  
SUITE = 1,267.34 SQ.FT.  
BALCONY = 152.20 SQ.FT.  
TOTAL = 1,419.54 SQ.FT.



List of unit numbers with this unit plan:

VIEWS

JLT Skyline, Marina Skyline, Park  
902, 1002, 1102, 1202, 1302, 1402, 1502, 1602, 1702, 1802, 1902, 2002, 2102, 2202, 2302, 2402, 2502, 2602, 2702, 2802, 2902, 3002, 3102, 3202, 3302, 3402, 3602, 3702, 3802, 3902, 4002, 4102, 4202, 4302, 4402, 4502, 4602, 4702, 4802, 4902, 5002, 5102, 5202, 5302, 5402, 5502, 5602, 5702, 5802, 5902, 6002, 6102, 6202, 6302, 6402

Disclaimer: 1. All dimensions are in metric, measured to wall finishes. 2. All materials, dimensions & drawings are approximate. 3. Information is subject to change without notice, at developer's absolute discretion. 4. Actual area may vary from the stated area. 5. Drawing are not to scale. 6. All images used are for illustrative purpose only and do not represent the actual size, features, specifications, fittings and furnishings. 7. The developer reserves the right to make revisions/ alterations, at its absolute discretion, without any liability whatsoever.



2 BEDROOM APARTMENT

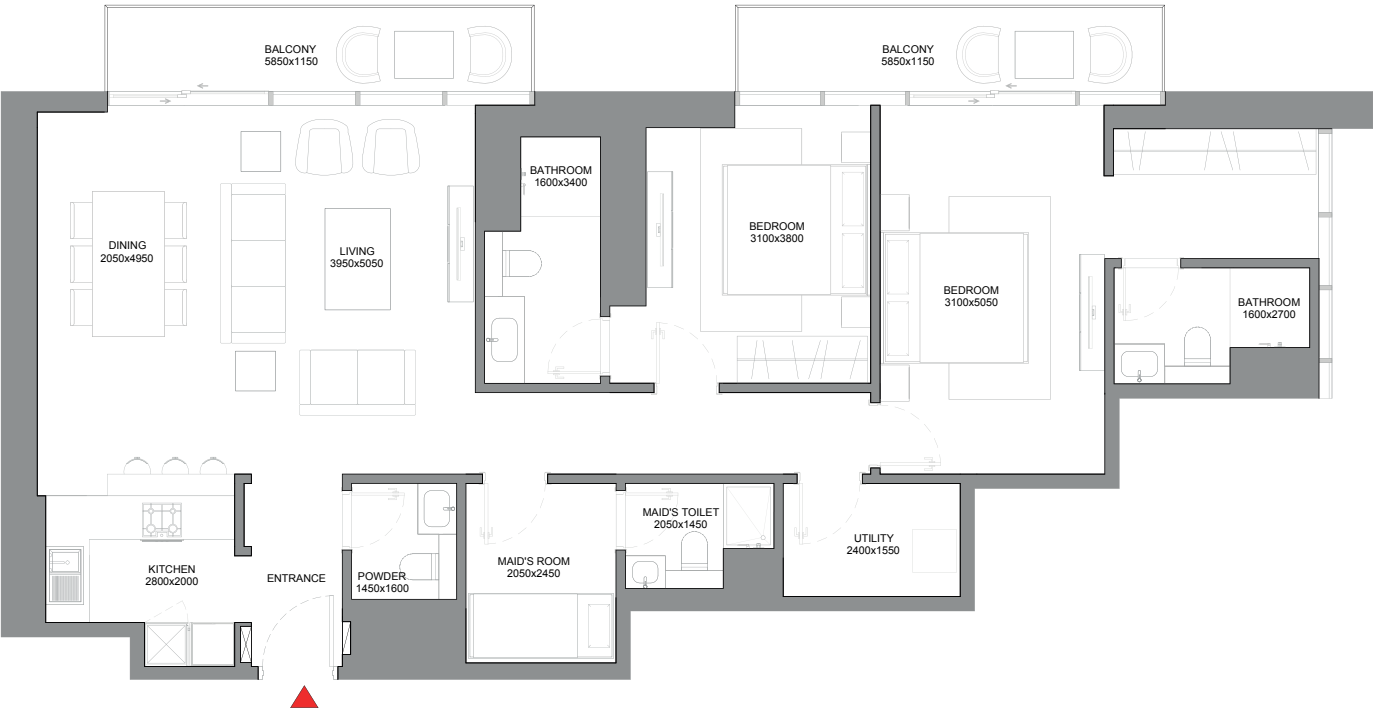
TYPE C (with maid room and powder room + balcony) VARIANT 1

TOTAL SALEABLE AREA

SUITE = 1,267.34 SQ.FT.

BALCONY = 152.20 SQ.FT.

TOTAL = 1,419.54 SQ.FT.



List of unit numbers with this unit plan:

VIEWS

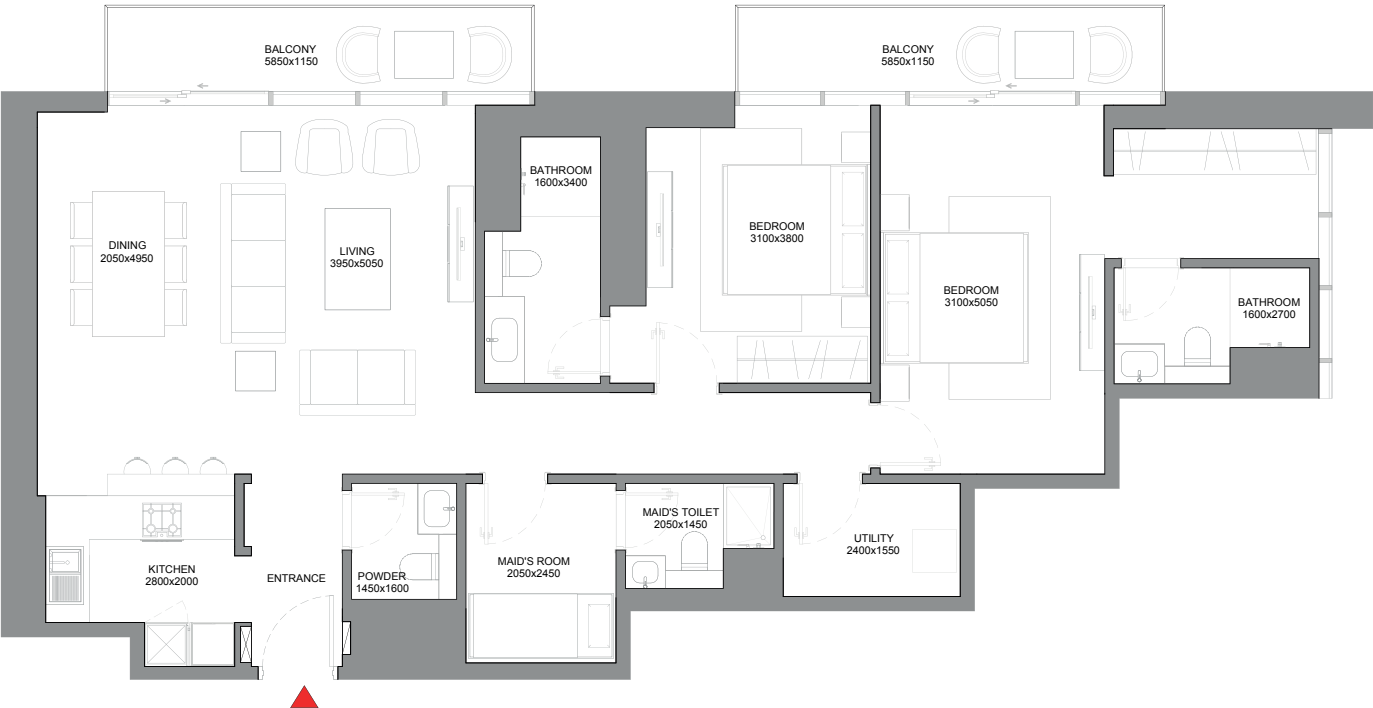
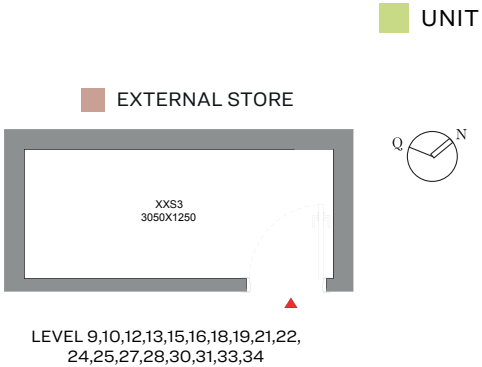
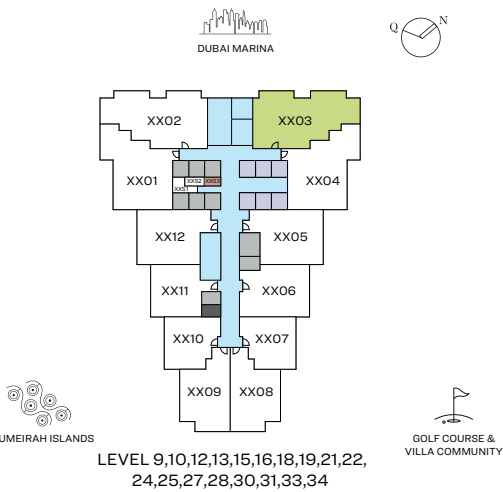
JLT Skyline, Marina Skyline, Park, Golf Course, Low Rise Villa Community

1103, 1403, 1703, 2003, 2303, 2603, 2903, 3203, 5003, 5103, 5203

Disclaimer: 1. All dimensions are in metric, measured to wall finishes. 2. All materials, dimensions & drawings are approximate. 3. Information is subject to change without notice, at developer's absolute discretion. 4. Actual area may vary from the stated area. 5. Drawing are not to scale. 6. All images used are for illustrative purpose only and do not represent the actual size, features, specifications, fittings and furnishings. 7. The developer reserves the right to make revisions/ alterations, at its absolute discretion, without any liability whatsoever.

2 BEDROOM APARTMENT + EXTERNAL STORE (TYPE A)  
TYPE C (with maid room and powder room + balcony) VARIANT 1

**TOTAL SALEABLE AREA**  
SUITE = 1,267.34 SQ.FT.  
BALCONY = 152.20 SQ.FT.  
TOTAL UNIT AREA= 1,419.54 SQ.FT.  
EXTERNAL STORE = 50.48 SQ.FT.  
TOTAL = 1,470.02 SQ.FT.



List of unit numbers with this unit plan:

**VIEWS**

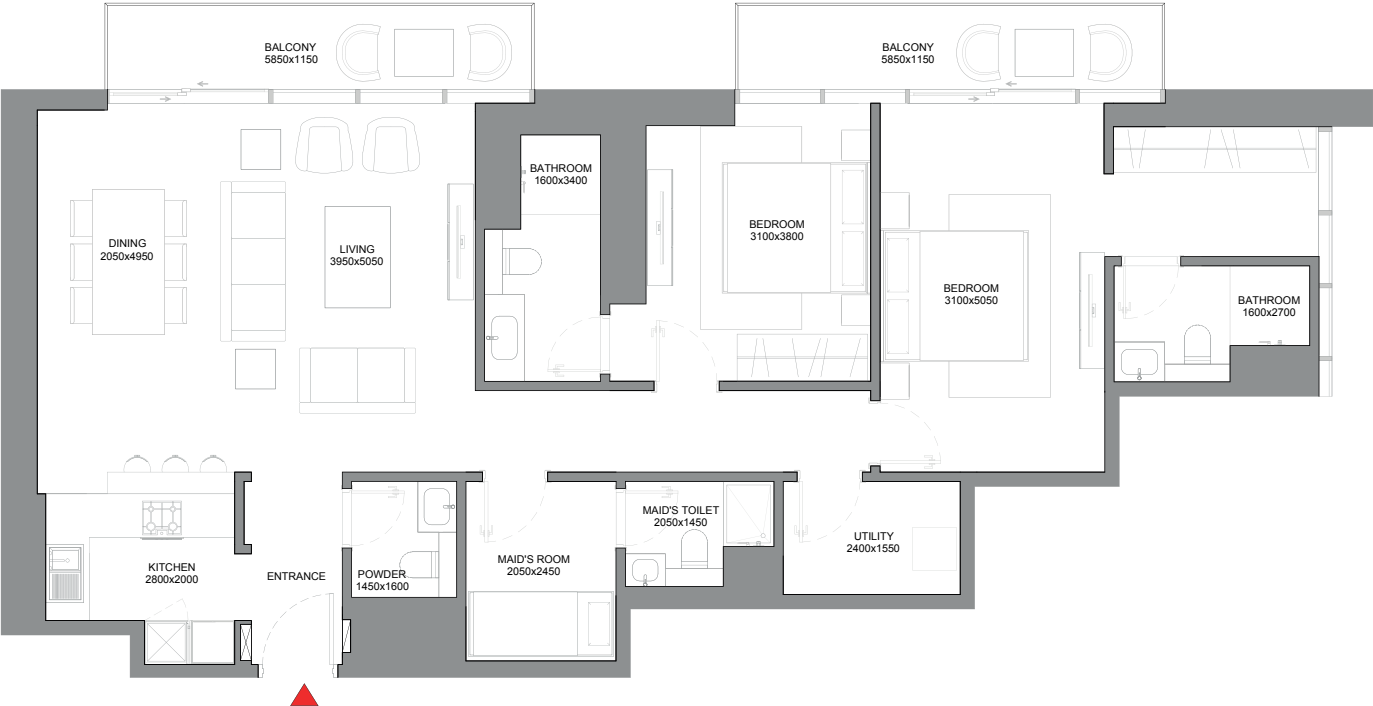
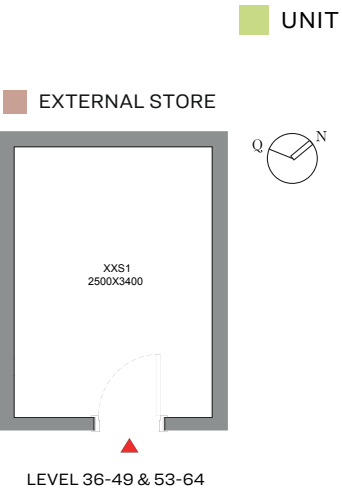
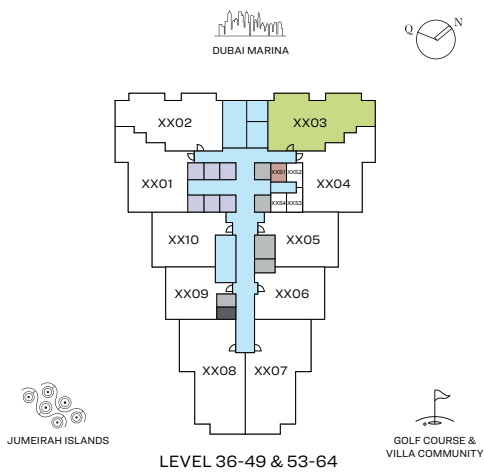
JLT Skyline, Marina Skyline, Park, Golf Course, Low Rise Villa Community  
903, 1003, 1203, 1303, 1503, 1603, 1803, 1903, 2103, 2203, 2403, 2503, 2703, 2803, 3003, 3103, 3303, 3403

Disclaimer: 1. All dimensions are in metric, measured to wall finishes. 2. All materials, dimensions & drawings are approximate. 3. Information is subject to change without notice, at developer's absolute discretion. 4. Actual area may vary from the stated area. 5. Drawing are not to scale. 6. All images used are for illustrative purpose only and do not represent the actual size, features, specifications, fittings and furnishings. 7. The developer reserves the right to make revisions/ alterations, at its absolute discretion, without any liability whatsoever.



2 BEDROOM APARTMENT + EXTERNAL STORE (TYPE B)  
TYPE C (with maid room and powder room + balcony) VARIANT 1

**TOTAL SALEABLE AREA**  
SUITE = 1,267.34 SQ.FT.  
BALCONY = 152.20 SQ.FT.  
TOTAL UNIT AREA= 1,419.54 SQ.FT.  
EXTERNAL STORE = 108.07 SQ.FT.  
TOTAL = 1,527.61 SQ.FT.



List of unit numbers with this unit plan:

**VIEWS**

JLT Skyline, Marina Skyline, Park, Golf Course, Low Rise Villa Community  
3603, 3703, 3803, 3903, 4003, 4103, 4203, 4303, 4403, 4503, 4603, 4703, 4803, 4903, 5303, 5403, 5503, 5603, 5703, 5803, 5903, 6003, 6103, 6203, 6303, 6403

Disclaimer: 1. All dimensions are in metric, measured to wall finishes. 2. All materials, dimensions & drawings are approximate. 3. Information is subject to change without notice, at developer's absolute discretion. 4. Actual area may vary from the stated area. 5. Drawing are not to scale. 6. All images used are for illustrative purpose only and do not represent the actual size, features, specifications, fittings and furnishings. 7. The developer reserves the right to make revisions/ alterations, at its absolute discretion, without any liability whatsoever.

# 1 BEDROOM APARTMENT

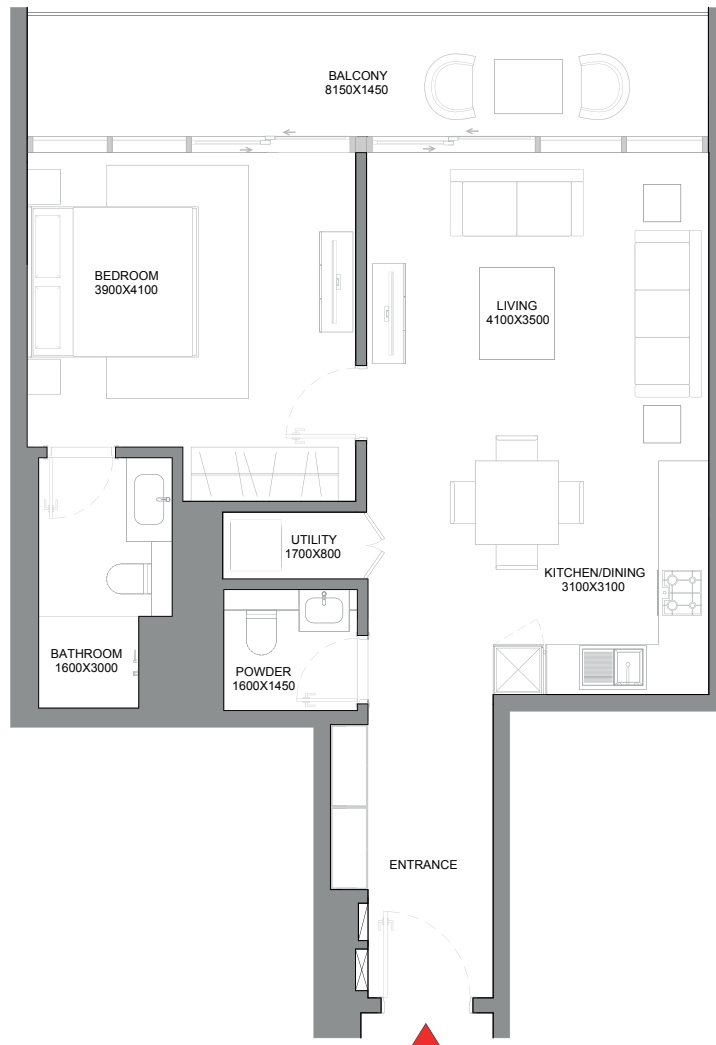
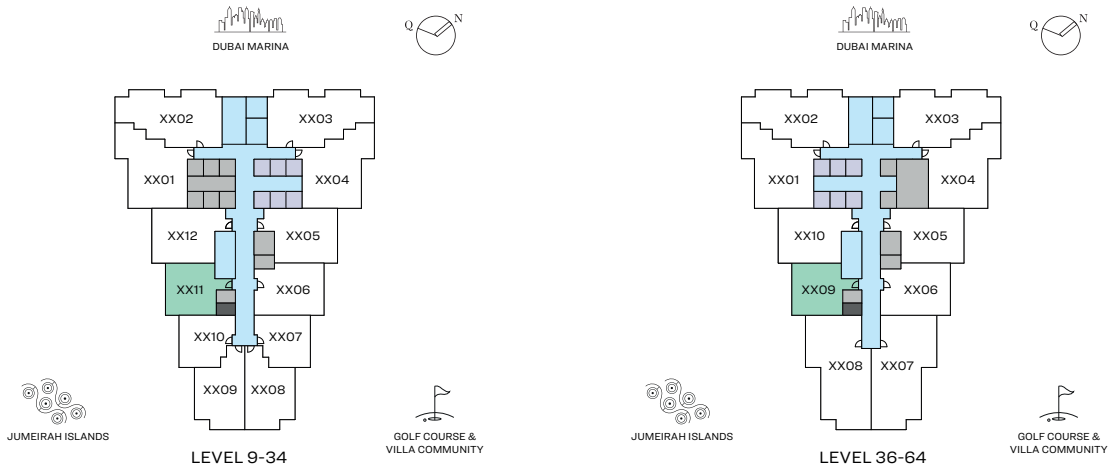
## TYPE A (with powder room + balcony)

### TOTAL SALEABLE AREA

SUITE = 734.42 SQ.FT.

BALCONY = 141.65 SQ.FT.

TOTAL = 876.07 SQ.FT.



List of unit numbers with this unit plan:

### VIEWS

JLT Skyline, Jumeirah Islands, Amenities

911, 1011, 1111, 1211, 1311, 1411, 1511, 1611, 1711, 1811, 1911, 2011

JLT Skyline, Jumeirah Islands

2111, 2211, 2311, 2411, 2511, 2611, 2711, 2811, 2911, 3011, 3111, 3211, 3311, 3411, 3609, 3709, 3809, 3909, 4009, 4109, 4209, 4309, 4409, 4509, 4609, 4709, 4809, 4909, 5009, 5109, 5209, 5309, 5409, 5509, 5609, 5709, 5809, 5909, 6009, 6109, 6209, 6309, 6409

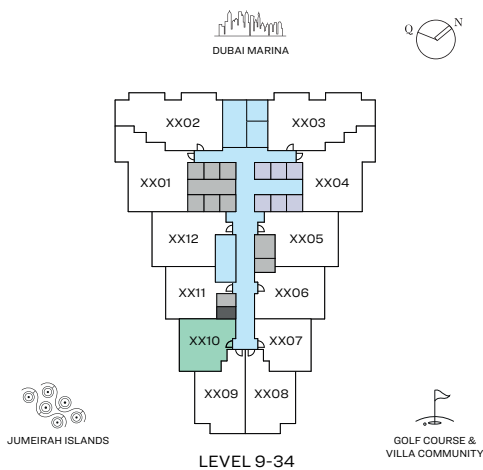
Disclaimer: 1. All dimensions are in metric, measured to wall finishes. 2. All materials, dimensions & drawings are approximate. 3. Information is subject to change without notice, at developer's absolute discretion. 4. Actual area may vary from the stated area. 5. Drawing are not to scale. 6. All images used are for illustrative purpose only and do not represent the actual size, features, specifications, fittings and furnishings. 7. The developer reserves the right to make revisions/ alterations, at its absolute discretion, without any liability whatsoever.



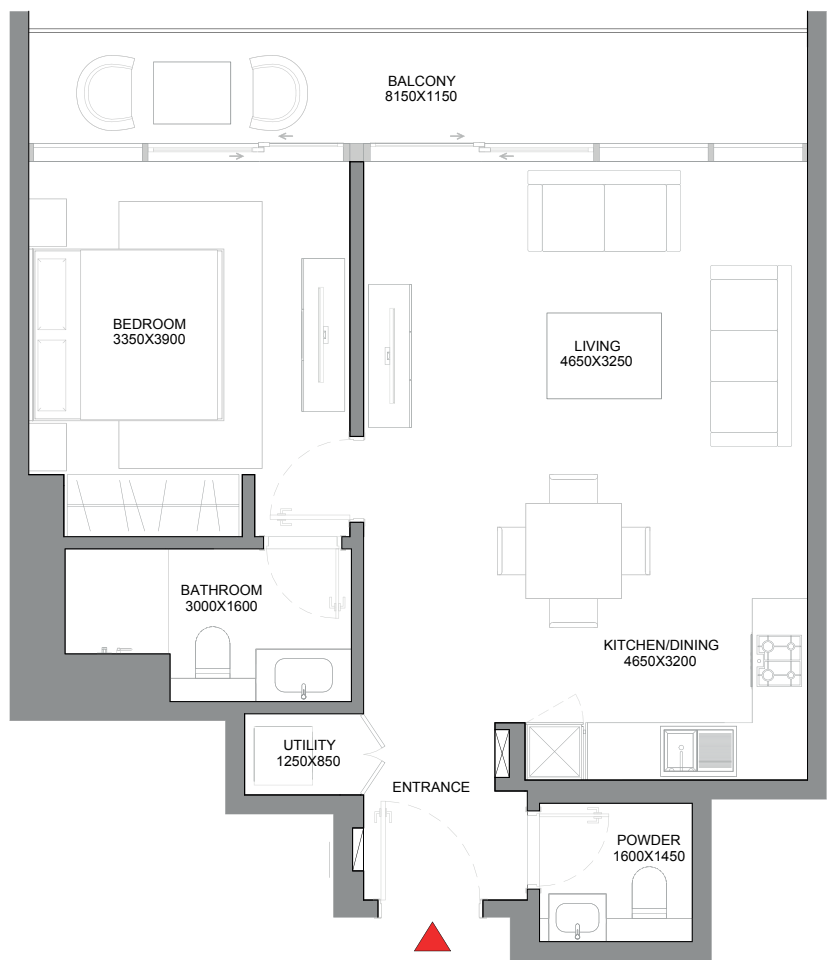


1 BEDROOM APARTMENT  
TYPE B (with powder room + balcony)

TOTAL SALEABLE AREA  
SUITE = 658.64 SQ.FT.  
BALCONY = 112.48 SQ.FT.  
TOTAL = 771.12 SQ.FT.



UNIT



List of unit numbers with this unit plan:

VIEWS

Jumeirah Islands, Amenities  
910, 1010, 1110, 1210, 1310, 1410, 1510, 1610, 1710, 1810, 1910, 2010

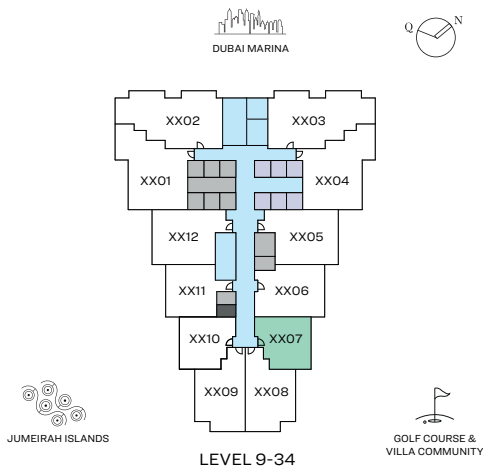
Jumeirah Islands  
2110, 2210, 2310, 2410, 2510, 2610, 2710, 2810, 2910, 3010, 3110, 3210, 3310, 3410

Disclaimer: 1. All dimensions are in metric, measured to wall finishes. 2. All materials, dimensions & drawings are approximate. 3. Information is subject to change without notice, at developer's absolute discretion. 4. Actual area may vary from the stated area. 5. Drawing are not to scale. 6. All images used are for illustrative purpose only and do not represent the actual size, features, specifications, fittings and furnishings. 7. The developer reserves the right to make revisions/ alterations, at its absolute discretion, without any liability whatsoever.

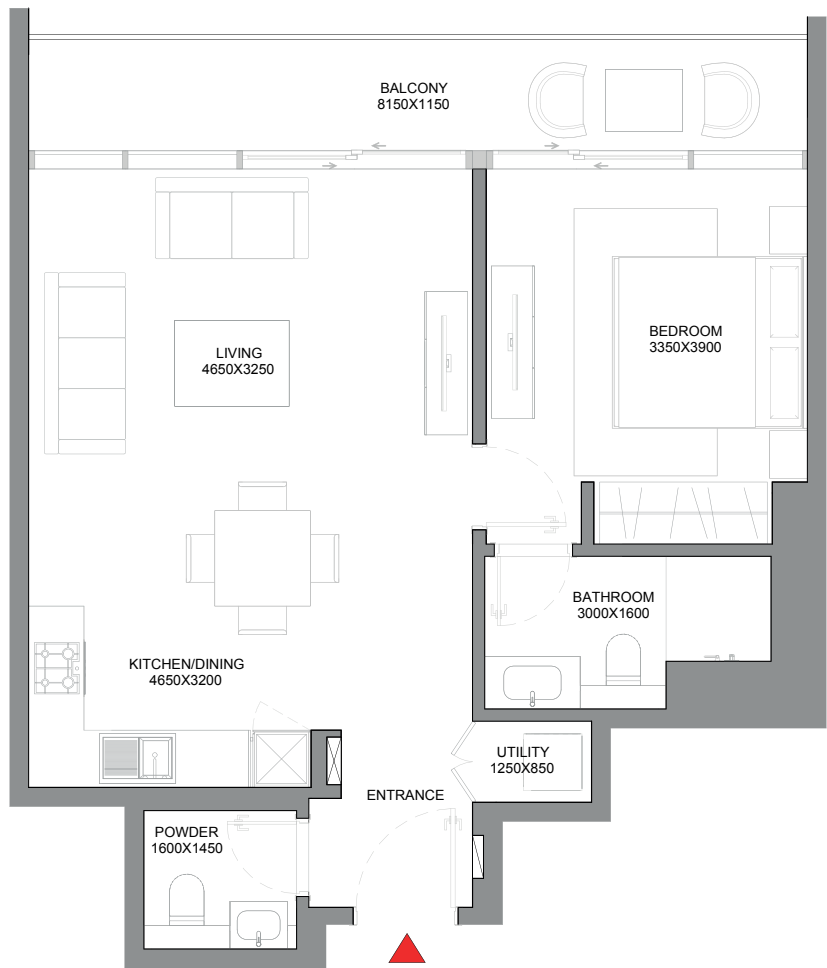


1 BEDROOM APARTMENT  
TYPE B (with powder room + balcony) VARIANT 1

TOTAL SALEABLE AREA  
SUITE = 658.64 SQ.FT.  
BALCONY = 112.48 SQ.FT.  
TOTAL = 771.12 SQ.FT.



UNIT



List of unit numbers with this unit plan:

VIEWS

Park, Golf Course, Low Rise Villa Community, Amenities  
907, 1007, 1107, 1207, 1307, 1407, 1507, 1607, 1707, 1807, 1907, 2007

Park, Golf Course, Low Rise Villa Community  
2107, 2207, 2307, 2407, 2507, 2607, 2707, 2807, 2907, 3007, 3107, 3207, 3307, 3407



Disclaimer: 1. All dimensions are in metric, measured to wall finishes. 2. All materials, dimensions & drawings are approximate. 3. Information is subject to change without notice, at developer's absolute discretion. 4. Actual area may vary from the stated area. 5. Drawing are not to scale. 6. All images used are for illustrative purpose only and do not represent the actual size, features, specifications, fittings and furnishings. 7. The developer reserves the right to make revisions/ alterations, at its absolute discretion, without any liability whatsoever.



# 1.5 BEDROOM APARTMENT

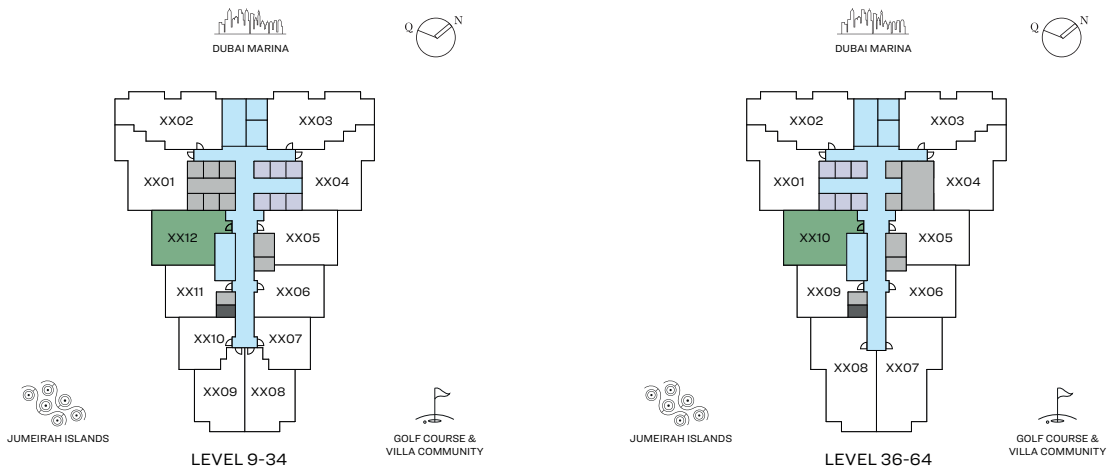
TYPE C (with study/store room + balcony)

## TOTAL SALEABLE AREA

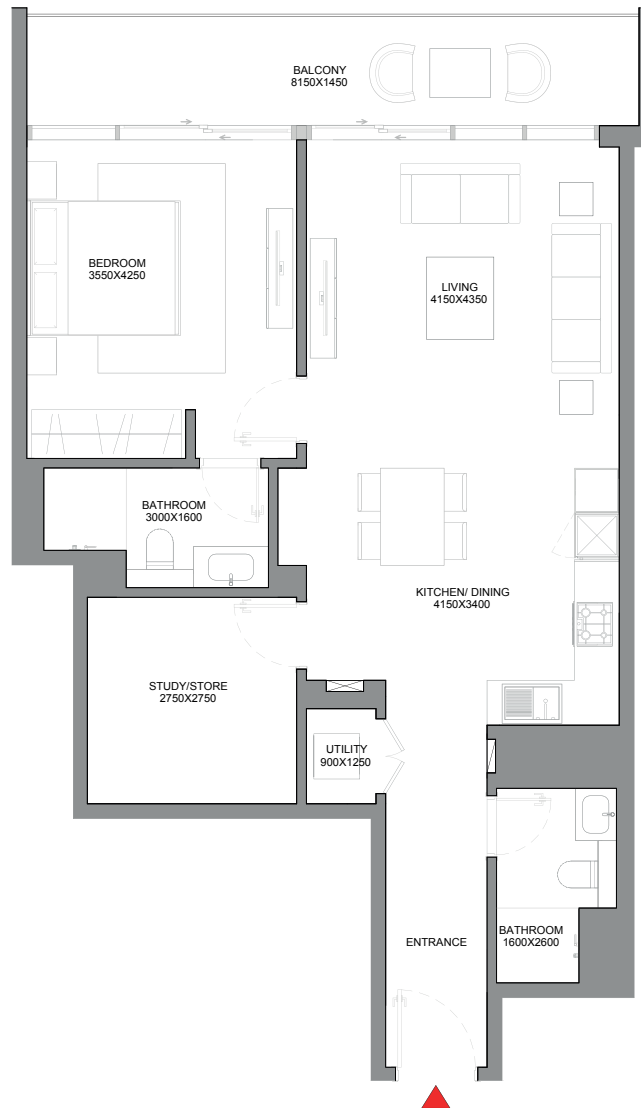
SUITE = 896.53 SQ.FT.

BALCONY = 139.72 SQ.FT.

TOTAL = 1,036.25 SQ.FT.



UNIT



List of unit numbers with this unit plan:

## VIEWS

JLT Skyline, Jumeirah Islands, Amenities

912, 1012, 1112, 1212, 1312, 1412, 1512, 1612, 1712, 1812, 1912, 2012

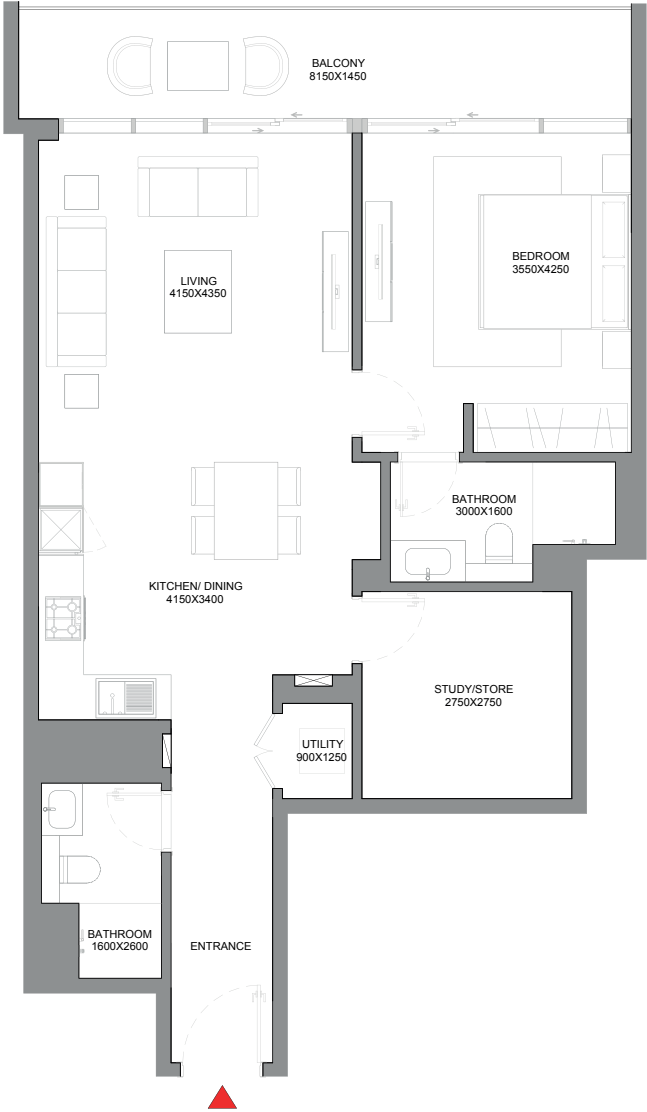
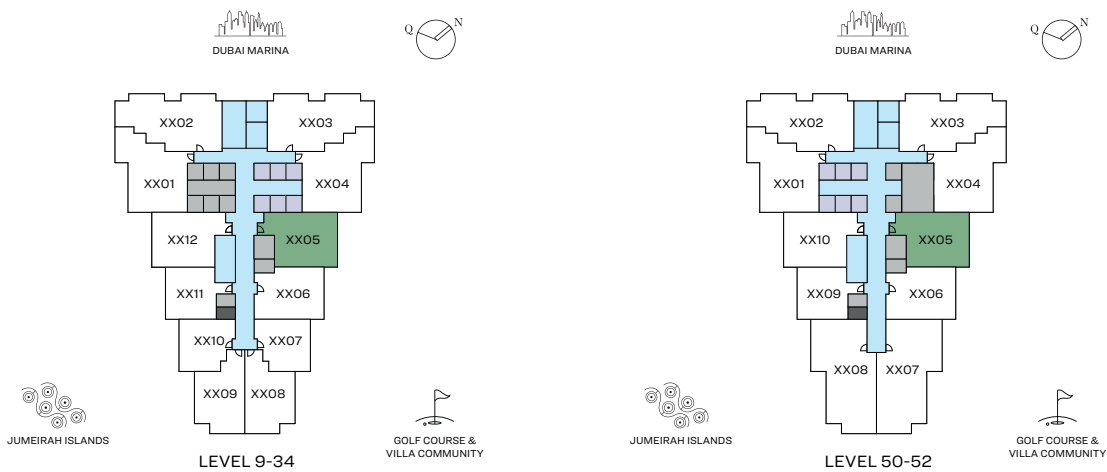
JLT Skyline, Jumeirah Islands

2112, 2212, 2312, 2412, 2512, 2612, 2712, 2812, 2912, 3012, 3112, 3212, 3312, 3412, 3610, 3710, 3810, 3910, 4010, 4110, 4210, 4310, 4410, 4510, 4610, 4710, 4810, 4910, 5010, 5110, 5210, 5310, 5410, 5510, 5610, 5710, 5810, 5910, 6010, 6110, 6210, 6310, 6410

Disclaimer: 1. All dimensions are in metric, measured to wall finishes. 2. All materials, dimensions & drawings are approximate. 3. Information is subject to change without notice, at developer's absolute discretion. 4. Actual area may vary from the stated area. 5. Drawing are not to scale. 6. All images used are for illustrative purpose only and do not represent the actual size, features, specifications, fittings and furnishings. 7. The developer reserves the right to make revisions/ alterations, at its absolute discretion, without any liability whatsoever.

1.5 BEDROOM APARTMENT  
TYPE C (with study/store room + balcony) VARIANT 1

TOTAL SALEABLE AREA  
SUITE = 896.74 SQ.FT.  
BALCONY = 140.04 SQ.FT.  
TOTAL = 1,036.78 SQ.FT.



List of unit numbers with this unit plan:

VIEWS

JLT Skyline, Park, Golf Course, Low Rise Villa Community, Amenities  
905, 1005, 1105, 1205, 1305, 1405, 1505, 1605, 1705, 1805, 1905, 2005

JLT Skyline, Park, Golf Course, Low Rise Villa Community  
2105, 2205, 2305, 2405, 2505, 2605, 2705, 2805, 2905, 3005, 3105, 3205, 3305, 3405, 5005, 5105, 5205

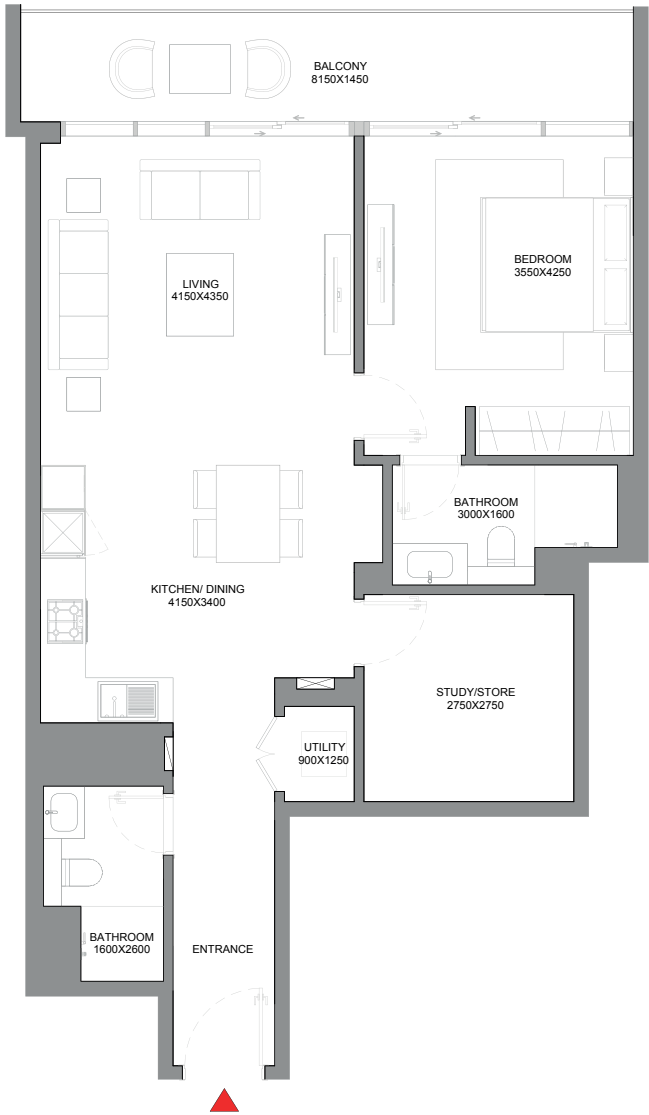
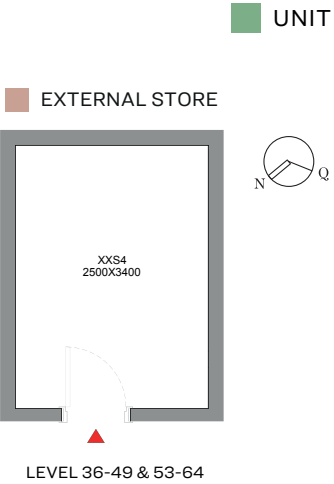
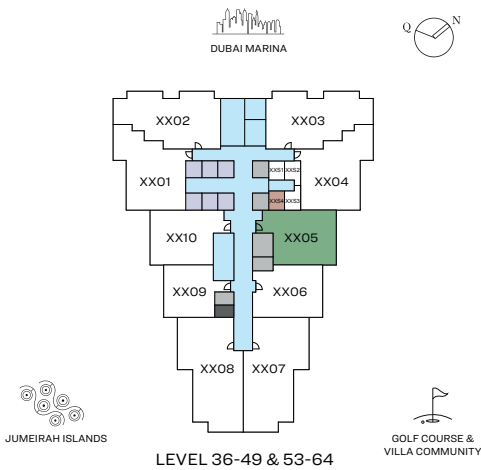
Disclaimer: 1. All dimensions are in metric, measured to wall finishes. 2. All materials, dimensions & drawings are approximate. 3. Information is subject to change without notice, at developer's absolute discretion. 4. Actual area may vary from the stated area. 5. Drawing are not to scale. 6. All images used are for illustrative purpose only and do not represent the actual size, features, specifications, fittings and furnishings. 7. The developer reserves the right to make revisions/ alterations, at its absolute discretion, without any liability whatsoever.

1.5 BEDROOM APARTMENT + EXTERNAL STORE

TYPE C (with study/store room + balcony) VARIANT 1

TOTAL SALEABLE AREA

SUITE = 896.74 SQ.FT.  
BALCONY = 140.04 SQ.FT.  
TOTAL UNIT AREA= 1,036.78 SQ.FT.  
EXTERNAL STORE = 108.07 SQ.FT.  
TOTAL = 1,144.85 SQ.FT.



List of unit numbers with this unit plan:

VIEWS

JLT Skyline, Park, Golf Course, Low Rise Villa Community  
3605, 3705, 3805, 3905, 4005, 4105, 4205, 4305, 4405, 4505, 4605, 4705, 4805, 4905, 5305, 5405, 5505, 5605, 5705, 5805, 5905, 6005, 6105, 6205, 6305, 6405

Disclaimer: 1. All dimensions are in metric, measured to wall finishes. 2. All materials, dimensions & drawings are approximate. 3. Information is subject to change without notice, at developer's absolute discretion. 4. Actual area may vary from the stated area. 5. Drawing are not to scale. 6. All images used are for illustrative purpose only and do not represent the actual size, features, specifications, fittings and furnishings. 7. The developer reserves the right to make revisions/ alterations, at its absolute discretion, without any liability whatsoever.

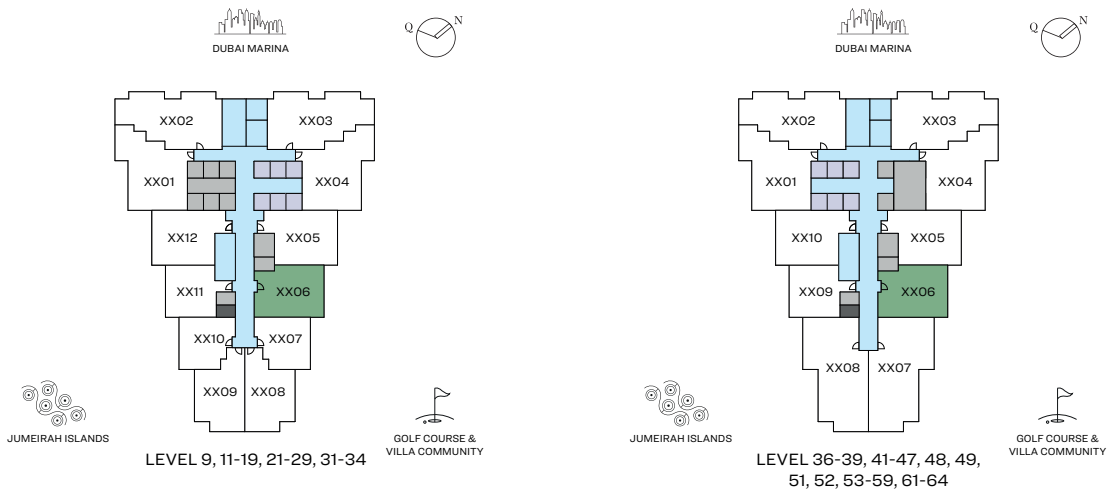


# 1.5 BEDROOM APARTMENT

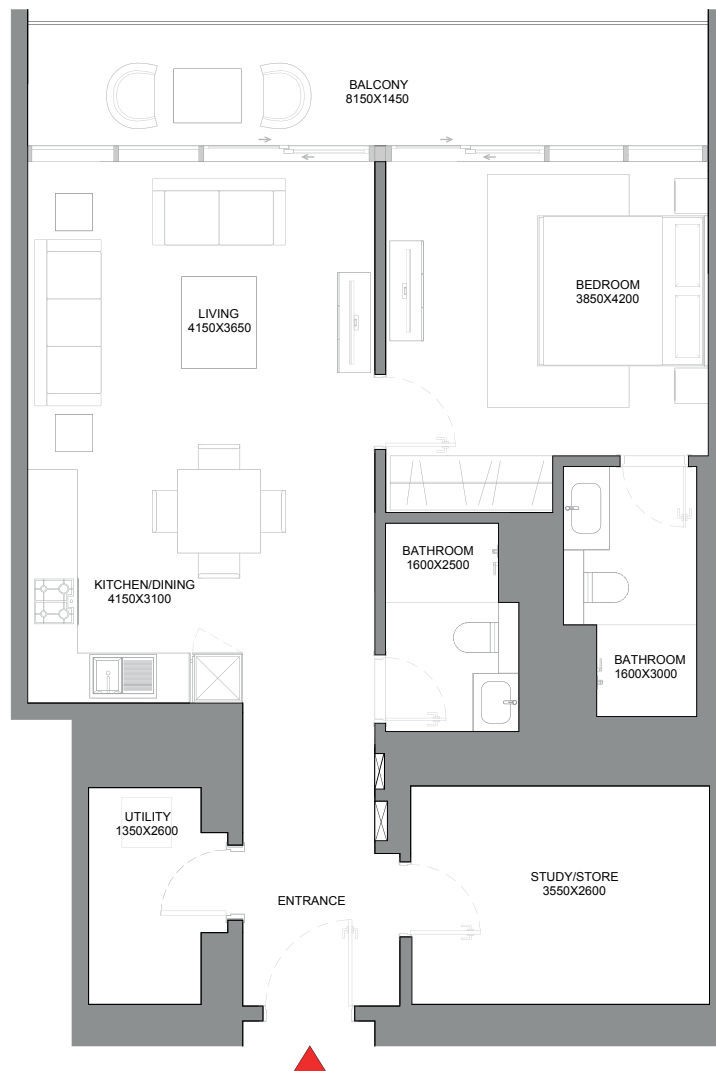
## TYPE D (with study/store room + balcony)

### TOTAL SALEABLE AREA

SUITE = 917.62 SQ.FT.  
BALCONY = 142.19 SQ.FT.  
TOTAL = 1,059.81 SQ.FT.



UNIT



List of unit numbers with this unit plan:

### VIEWS

JLT Skyline, Park, Golf Course, Low Rise Villa Community, Amenities  
906, 1106, 1206, 1306, 1406, 1506, 1606, 1706, 1806, 1906

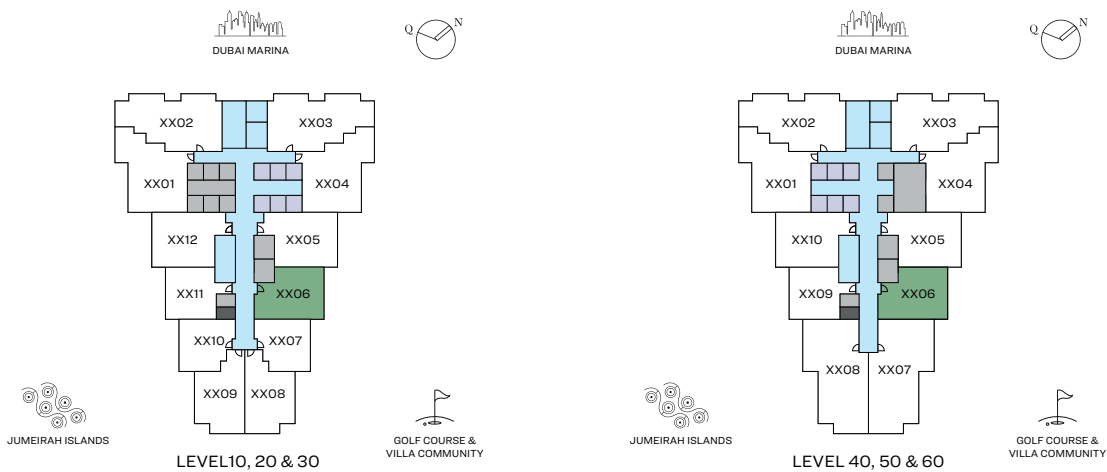
JLT Skyline, Park, Golf Course, Low Rise Villa Community  
2106, 2206, 2306, 2406, 2506, 2606, 2706, 2806, 2906, 3106, 3206, 3306, 3406, 3606, 3706, 3806, 3906, 4106, 4206, 4306, 4406, 4506, 4606, 4706, 4806, 4906, 5106, 5206, 5306, 5406, 5506, 5606, 5706, 5806, 5906, 6106, 6206, 6306, 6406

Disclaimer: 1. All dimensions are in metric, measured to wall finishes. 2. All materials, dimensions & drawings are approximate. 3. Information is subject to change without notice, at developer's absolute discretion. 4. Actual area may vary from the stated area. 5. Drawing are not to scale. 6. All images used are for illustrative purpose only and do not represent the actual size, features, specifications, fittings and furnishings. 7. The developer reserves the right to make revisions/ alterations, at its absolute discretion, without any liability whatsoever.

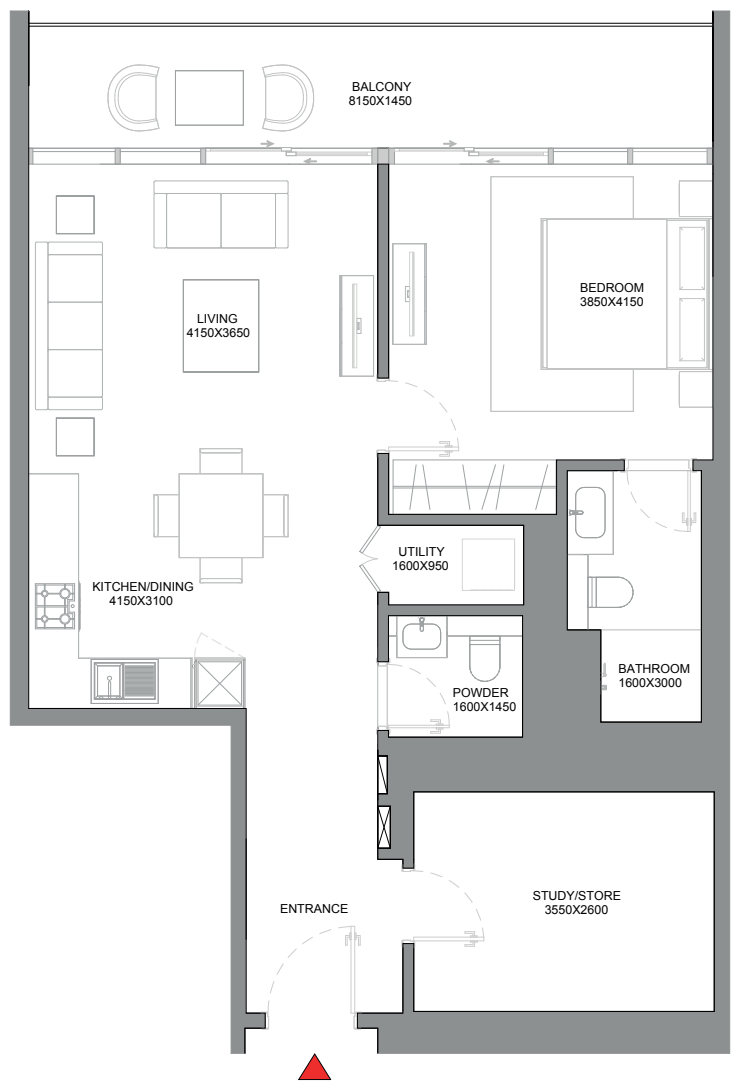


1.5 BEDROOM APARTMENT  
TYPE E (with study/store room + balcony)

TOTAL SALEABLE AREA  
SUITE = 862.40 SQ.FT.  
BALCONY = 142.19 SQ.FT.  
TOTAL = 1,004.59 SQ.FT.



UNIT



List of unit numbers with this unit plan:

VIEWS

JLT Skyline, Park, Golf Course, Low rise villa Community, Amenities  
1006, 2006

JLT Skyline, Park, Golf Course, Low rise villa Community  
3006, 4006, 5006, 6006



Disclaimer: 1. All dimensions are in metric, measured to wall finishes. 2. All materials, dimensions & drawings are approximate. 3. Information is subject to change without notice, at developer's absolute discretion. 4. Actual area may vary from the stated area. 5. Drawing are not to scale. 6. All images used are for illustrative purpose only and do not represent the actual size, features, specifications, fittings and furnishings. 7. The developer reserves the right to make revisions/ alterations, at its absolute discretion, without any liability whatsoever.



VERDE

BY SOBHA

**SOBHA**  
REALTY